

# High School Configuration

- Historical Context

TO: DR. WIZIARDI  
From: Earl Lebakken  
Date: October 20, 1993

Since conception, the two high schools in one building have been an often discussed topic in the community and with our school staff. The only constant of these discussions is that very seldom does one change his/her original opinion on the issue. It seems that within moments after exposure to the concept one tends to form an opinion and then become an expert. It could happen to you.

Even though this issue was often discussed in the 70's and early 80's, it was completely overshadowed by the conflicts surrounding modular scheduling and the administrative structure at that time. Since then, however, it has been the two high school concept that has drawn the interest. Three formal studies took place in 1980, 1988, and 1990-91. Information from those studies are attached.

The 1980 Citizen Athletic Study Committee reported only on the philosophy and needs of our 7-12 sports program. Andy Gonring was an active member of that committee. Key recommendations included an evaluation requirement for all coaches, parent meetings for each team, and the development of a citizens committee to work as a liaison between athletics and the community. These three requirements greatly increased the responsibilities of the Athletic Director. Also in their recommendations was that the administration should seek out candidates for vacancies first on their coaching ability and then on his/her teaching ability.

In 1988 I was asked to provide statistical data on the cocurricular and athletic programs with comparisons to other schools our size. The resulting comparisons are attached. The study I was asked to do also included some academic and instructional issues and a climate report from two U.W. Madison professors. The Board placed little emphasis on the climate study in that it was more a review of the research than an actual study of our high school. The Board took no action other than accepting our reports.

The most extensive study took place during the 1990-91 school year. Geoff Steinbach and I chaired a 24 member committee of coaches, parents, administrators, and former athletes. Andy Gonring was also a member of the committee prior to becoming a board member. Our final report was a recommendation to combine the high schools. This controversial conclusion led to a series of public hearings followed by a referendum that was soundly defeated. A citizens committee against the referendum had been formed with then former board member Mike Lewis as an

active member. Following the defeated referendum, which was only advisory, the Board voted 4-3 to continue as two schools. Then the Board made it clear that they wanted to address and implement many of the recommendations beginning on page 9 of the report. Since then, Geoff Steinbach has put considerable effort into the scope and sequence of our program and has implemented several recommendations. However, the recommendation that the present selection process be changed to reflect a geographical division or feeder school concept has not been addressed (see p. 9 of the report). It is here where you may want to begin addressing the separate or constant issue the Board has placed as a priority for you.

cc: J. Reinert

enc

MEMO4.WPS

# The West Bend News

THURSDAY

FEBRUARY 22, 1963

TWO SECTIONS

NUMBER 17

est Bend

PUBLISHED EVERY TUESDAY AND THURSDAY AT WEST BEND, WIS.

Single Copy 7c

## ay Planning for New 'Middle School'

### ary Election in State Next Tuesday

Initial Use of  
Building for  
7-8-9 Grades

City, County

Voters to Cast  
Ballots Mar. 5

To Nominate High  
Court Candidates

Washington county electors, along with voters from throughout Wisconsin, will cast their ballots next Tuesday for a candidate for the state supreme court to fill the vacancy created by the retirement of Justice Timothy Brown. The "run-off" of the non-partisan judicial election will be held at the regular spring election on April 2.

City Voting Hours  
And Polling Places

Election polls in West Bend will be open 7 a. m. until 7 p. m. for the judicial primary election next Tuesday, March 5. Voters of the 1st, 2nd and 3rd wards will vote in the basement of the public library building on the corner of 8th and Elm sts. Voters of the 4th, 5th and 6th wards will cast their ballots in the basement of the city hall. Electors of the 7th ward will vote at the former Barton village hall.

Voting hours in the various precincts throughout the county vary greatly. Residents of the various villages and townships are urged to check the voting hours in their community to be sure they have time to cast their ballots.

Voters will have a slate of five candidates from which to choose for nomination of their supreme court candidate, as follows:

Bruce F. Bellfuss, Davis A. Donnelly, William H. Evans, Harry E. Larsen, Christ Alexopoulos.

Some Interest in County

While judicial elections seldom draw a great turnout of voters, some interest has been generated on the county level in the March 5 judicial primary following the endorsement by county residents of Circuit Judge Bruce F. Bellfuss. A testimonial and fund raising dinner in his honor was held recently at the Linden Inn on Big Cedar.

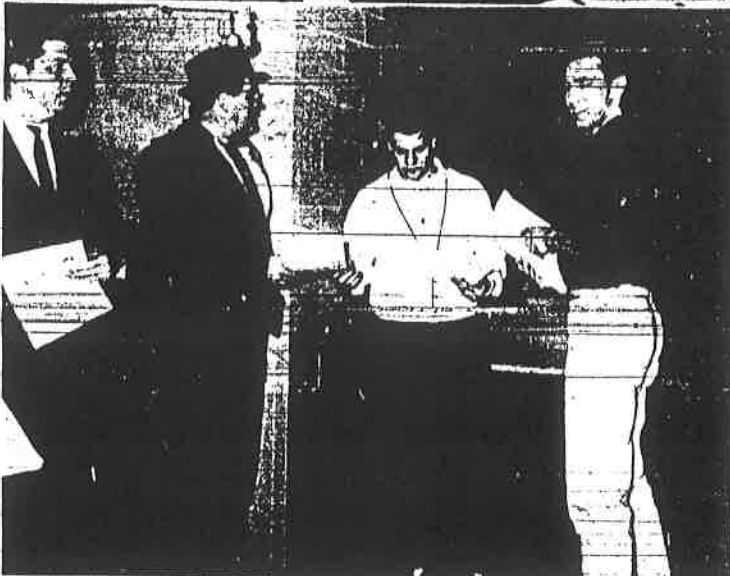
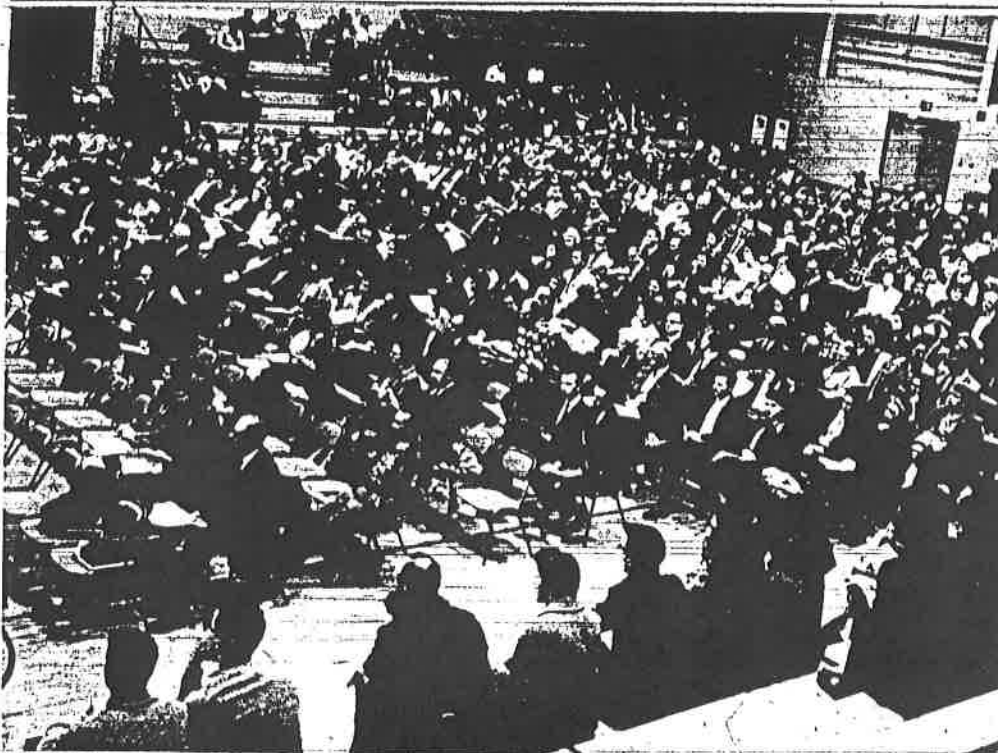
(Continued on Page 3, Col. 4)

'Alice' Contest  
Entry Blanks  
Now Available

Manitowoc Will be  
Host for Finals

Entry blanks for the 1963 "Alice in Dairyland" contest are

Electors at District Meeting Approve New School



A partial view of the crowd of more than 700 electors who attended last Monday night's adjourned annual school meeting at the high school gym is shown in the upper photo. By an overwhelming voice-vote majority, the electors approved the construction of a new intermediate school.

cost of between \$1,500,000 and \$1,700,000.

In the lower photo, high school students passed out exhibits to Edward Backhaus, left, and Atty. William Marth of West Bend as they entered the meeting room prior to the beginning of the session.

'Rumble' Nipped  
But Discipline  
Problems Rise

Public Invited  
To Hear Ripon  
College Prexy

WEBA Sponsors -  
Local Appearance

The West Bend Education association this week extended an invitation to all members of the West Bend school district to hear a very entertaining presentation by Dr. Fred O. Pinkham, president of Ripon college, at the McLane school gym on Tuesday, Mar. 5, at 8 p. m.

Dr. Pinkham is a widely traveled individual, and on this occasion he will discuss his trip to American radar stations and atomic installations in Greenland, Alaska and England. Colorful slides taken by Dr. Pinkham on this trip will help the audience visualize some of the places more clearly as he discusses them.

Robert Peters, WEBA public relations director, has spoken to Dr. Pinkham and been assured by him that the program would be well received, as it has been in other communities. On behalf of the WEBA Peters said:

Approve Study of  
High School Needs

Electors of the West Bend school district Monday night gave the school board approval to proceed with hiring an architect to draw up plans and specifications and to seek bids for a new intermediate school building. The structure, proposed for the Stoffel site on the west side, "currently" would be used to house grades 7, 8 and 9. The building would provide room for about 1,000 students at an estimated cost of between \$1,500,000 and \$1,700,000. A referendum on the bond issue will come later.

Over 700 persons attended the well organized, fast-moving meeting in the high school gym at which other resolutions were also passed. The board's readiness might be compared with that of a successful basketball team, whose efforts have finally jelled. Two other major resolutions passed were these:

1. That the district construct and equip an addition of not more than five classrooms to the Jackson elementary school at an estimated cost of \$80,000. (An accompanying resolution authorized the board to purchase about six acres of land adjoining the Jackson school site for about \$8,000.)

2. That the board raise a levy of not more than \$10,000 to hire professional consultants to review and recommend solutions to the high school problem. This problem includes resolving the question of one larger high school vs. two smaller high schools but would not be limited to that question.

"Ultimate Goal"

Thomas J. Kenny, clerk of the board, who did an excellent job of bringing electors up to date on what has been done on building planning by the board and citizen's long range planning committee, emphasized that both groups unanimously agreed that a 4-year high school is best for the district and that "this will be our ultimate goal."

But in the belief that "we must start construction soon on some school building" to take care of both the elementary and high school students by September of 1964, he said the board recommends the middle school to be used for a few years for grades 7, 8 and 9. Exhibit IX gave a "preliminary estimate for a middle school for 1,000 students, grades 6-8," at an estimated cost of \$1,544,000.

"It should be noted that this cost could go up slightly if we house 9th grade pupils in the building because of the need for some facilities normally not found in an elementary school," Kenny said in his report.

Helping to bring the meeting to a conclusion in less than 2 1/2 hours was a summation by J. H. Brown on "this happy solution . . . to relieve pressure on both ends (high school and elementary)," and as for the high

## Gravel Pit

(Continued from Page 1)  
equipment reduced the nuisance element of such work. Atty. Spohn also elaborated on these points and indicated that one large, efficient operator would cause less harm in the area than many small operators.

Individuals at the meeting cited the dangers and hazards the large trucks would create to motorists, pedestrians and particularly school children. Several also objected to the nuisance created by the trucks, dust and dirt and the possible lowering of the "already low" water table in the area, especially if "washing operations" were used. Company representatives said no plans for washing operations were contemplated.

Chairman Lofy, questioned from the audience, explained that granting a permit for rezoning required time to obtain approval of the town planning committee which would resubmit it to the town board for approval before the property could be rezoned and that the final step would be approval by the county board.

Atty. Henry Schowalter of West Bend, attorney for the township, explained several of the legal aspects of the situation when such questions arose.

## School Board

(Continued from Page 1)  
school problem. "We do have time to make a study," agreeing with Arnold-Moeller's suggestion to seek professional assistance. He moved that the district proceed with the middle school high school study.

After some discussion toward clarification of this resolution, with Atty. Steve O'Meara and others seeking emphasis on the word "currently," the other proposal on the professional study of the high school problem was discussed from various aspects by Harold Braun, R. D. Ziegler and Moeller. Atty. Ted Simister finally suggested the succinct phrase, "to study the high school problem." A figure of \$15,000 was lowered to \$10,000 (or less) for the study as the board realized it could request an additional amount at a later date if it were needed.

Moeller, chairman of the long range planning committee, wanted to make certain that the study would include exploring the possibility of enlarging the present high school facility to accommodate an enrollment of up to 2,500 students.

A question on the possibility of a parochial high school in the West Bend area could not be definitely answered but no Catholic high school is expected at least in the next 10 years, according to the most reliable sources, Kenny revealed.

### Crowded Schools

In their reports, Peter Nantetti, director of elementary education, and Paul M. Loof-boro, superintendent of schools, had described crowded conditions at the Jackson and McLane schools, particularly. The present capacity at the Jackson school is 200, but it has an enrollment of 184, leaving crowded the kitchen to a kindergarten. In the next four years its enrollment will increase another 100 or more students.

Loof-boro referred to various exhibits showing enrollment projections. The 1948-49 school year is projected at 200, but it has an enrollment of 184, leaving crowded the kitchen to a kindergarten. In the next four years its enrollment will increase another 100 or more students.

Loof-boro referred to various exhibits showing enrollment projections. The 1948-49 school year is projected at 200, but it has an enrollment of 184, leaving crowded the kitchen to a kindergarten. In the next four years its enrollment will increase another 100 or more students.

ate a tremendous problem for the board. The law required that consolidation be completed by July 1, 1962, and it was not until the spring of 1962 that the board finally learned what area was to be added to this district. 1 point: this out because many of you might wonder why the board delayed so long in recommending the construction of specific additional school facilities.

"After consolidation was completed, and the board knew the extent of the school district boundaries and the number of school children residing therein, it immediately appointed a citizen's long range planning committee. This was done on Mar. 16, 1962.

### Changed Its Thinking

"Some weeks prior to the July meeting the board had agreed to recommend providing additional school facilities through the construction of a new lower elementary school for grades kindergarten through 5th or 6th grade, using McLane primarily for 7th and 8th grade, and through the construction of a second high school. After meeting with various groups, including the city planning commission, the citizen's long range advisory committee, and representatives of the local parochial schools, the board changed its thinking. It came to the conclusion that the entire problem could be handled most expeditiously and expensively through the construction of a 7, 8, 9 school building. It unanimously agreed, and believe me, the board was sincere, that the construction of this single school facility would alleviate the housing problem for both the elementary school and the high school."

"At that time the board still had hopes of completing such a facility for the opening of school in September, 1963. This was especially true as concerns the high school, for the board was not at all ready to recommend expansion of our present high school without spending much additional time studying the problem.

"You are all aware of what occurred at the Nov. 23 special meeting (he went in detail on the seven plans that were then developed). How large a school do we want? In connection with the high school the board unanimously and strongly urges the following:

1. That our present high school facility not be expanded, and

2. That the high school enrollment should not be increased above what it is today, namely, 1,250.

The board has several reasons for coming to these conclusions, and they are as follows:

### Could Be Mistake

1. While the high school could be expanded now, the future may prove this to be a mistake. Furthermore, if this becomes absolutely necessary, then it could be accomplished at a later date.

2. West Bend high school already is a large high school. (a) From the latest enrollment figures which we have, and these are for June, 1962, our high school is also ranked 24th in the state.

(b) Of the 4-year high schools West Bend ranks 16th.

(c) There are only 16 high schools in the state with an enrollment above 1,600, and one of these is 1,601.

3. We believe that it is entirely possible to provide an effective curriculum with more than one high school. We think this is especially true in that half of the courses studied in high school are required courses.

### Low Monthly

4. The board believes that business is extremely large

high schools tend to lose their identity.

5. Providing an outstanding high school requires an outstanding faculty, and even a faculty can lose its identity in the large high school.

6. Scholastic achievement is only part of the finished product and the extremely large high school will reduce the opportunities for many students for participation in many of the co-curricular activities.

7. A single high school of increased enrollment will magnify our social and discipline problems. (See separate item).

8. We are told that almost all educators believe that a high school enrollment ideally should not exceed about 1,000 students. In this connection it is interesting to note that our administrators unanimously agree that our high school facilities should not be expanded and that our enrollment should not be increased. Further, last Wednesday evening the West Bend Education association, an organization composed of the faculty of our schools, unanimously adopted a resolution recommending that our high school not be expanded in the building every day.

These, therefore, are the reasons why the board recommends that our high school facility not be expanded and that the high school enrollment not be increased. The board would much prefer that we build a second high school.

Moeller, in suggesting the exploratory high school study, posed these questions to be studied before the district commits itself to two smaller high schools:

1. Quality of educational opportunities provided by a high school with an enrollment of 2,000 to 2,500 pupils as compared to educational opportunities provided by two smaller high schools with enrollments of 1,000 to 1,250.

2. The cost of providing buildings and equipment in two complete and separate school plans.

3. The cost of operating two smaller schools as compared to operating one larger school.

4. The question of providing a teaching staff for each school which includes training for teaching in the many specialized areas properly offered in a curriculum with a wide diversity of interests and goals among its students.

5. The acceleration of the time for building the third and fourth high school plants as populations grow, because of limiting enrollment in any high school to about 1,000.

6. The impact on the taxpayer of building, staffing and operating two and ultimately more, smaller high schools.

### Is That So?

High heels were invented by a woman who had been kissed on the forehead.

— USS Bushnell's Turtle

### THE WEST BEND NEWS

THURSDAY, FEB. 28, 1963  
Volume 188 Number 17  
Published on Tuesday and Thursday at 105 S. Sixth Avenue, West Bend, Wisconsin, by WEST BEND NEWSPAPERS, INC.

Entered as second class matter January 1, 1962, at the Postoffice, West Bend, Wis., under the act of Congress of March 3, 1879, as amended.

SUBSCRIPTION PRICE:  
Single copies 10¢  
6 months \$5.50  
12 months \$10.00

mann and Bill Uebels of Den 8. Absent was Mike Hoberg, of Den 1. The Webelos leaders for the dens were Joe Zadra and Ari Hoberg. The total pole of Cubbing is shown in the background.

Other awards presented at the dinner were: Wolf — Steve Dhein, Martin Focha, Billy Hutson, Steve Knop, Jeff Martin,

## Primary

(Continued from Page 1)  
lake and a large crowd attended the event.

The interest expressed in supporting Bellfusa may, conceivably, result in a heavier than normal turnout at the polls in Washington county.

No other contests loom on the county ballots, however, to add interest to the primary election in this area.

County returns will again be tabulated Tuesday night at the Washington county courthouse.

### Nominate 2 Candidates

Of the five candidates whose names appear on the judicial primary election ballot, the two candidates receiving, respectively, the highest and the next to the highest number of votes cast, will be nominated as candidates for the April 2 spring election for justice of the state supreme court.

The winning candidate in the April 2 election will be elected to succeed Timothy Brown, whose term will expire on the first Monday of January, 1964, to serve for a 10 year term.

## Geiger Ford

(Continued from Page 1)  
been installed on the west and east walls of the building so semi-trailers delivering merchandise can drive in one door and out the other. The over-size doors also permit easy access of large trucks for service.

Four hoists have been installed in the spacious garage. Three are for cars and one heavy duty hoist accommodates trucks. In addition, there are the normal service stalls, a John Bean Visualiner for front end and steering alignment, the regular devices and a skilled crew of mechanics to provide all required service for all makes of cars.

Another smaller overhead garage door on the south side of the building is readily accessible for cars or "light deliveries" eliminating the necessity of opening the large overhead doors except for over-size loads. A door to the balcony area, permitting easy delivery or stocking of parts from the garage area has also been installed. The large acreage provides

ample space for further possible expansion of the building. In addition to the many features already enumerated, the garage also has a body and paint shop, a tool room, as well as a locker and shower room for garage workers.

### To Award Gifts

All area residents are cordially invited to visit the Geiger Ford garage and showrooms during the Grand Opening celebration beginning today and continuing through Friday and Saturday.

Included in prizes to be awarded during the opening, in addition to refreshments, will be a beautiful Rolls black, red leather lined ladies handbag; a case of Libby's assorted vegetables; a gold plated automatic 4-10 cup Regal Ware coffee maker; an Enger-Kress combination 115 and Hers all leather billfold and key taddy set; a pair of West Bend Concrete Products flower urns; a West Bend Co. Kabob 'n Grill; a sturdy and attractive Weaber cartop luggage carrier and a 45 piece Kenro dinnerware set from Kenro Mfg. Corp.

Readers are invited to turn to the Geiger Ford advertisement in this issue of the West Bend News for further information relative to contractors who assisted in the construction of the attractive new Geiger Ford building.

The following plumbing permits have been issued by Donald Krenka, plumbing inspector for the T. Folk. Andrew Mueller for Mueller, Schanen Plumbing and Heating for Roy Peterson. Retzlaff Plumbing and Heating for Leroy Severson. Horch and Miller, Plumbing and Heating for W. J. Layzinski. Reupert Plumbing for Howard Pantless.

The following building permit was issued at the office of the city clerk.

Robert Moser, enclosure front porch of dwelling at 1450 Fond du Lac ave.

Old Memories  
Old-timers remember when a porterhouse steak was the cheap remedy for a black eye.

## EFFECTIVE MARCH 15

# The Bank of Kewaskum

Will remain open between  
4 and 5 p. m. on Fridays  
and close at 8 instead of  
8:30 p. m.

# BANK of KEWASKUM



# West Bend News

TUESDAY

3-16-68

PUBLISHED EVERY TUESDAY AND THURSDAY AT WEST BEND, WIS. 53095

Single Copy 7c

NUMBER 22

## West Bend Voters Decisively OK \$10 Million Bond Issue Referendum

### Three-Phase Program Wins 2,705-1,443

#### To Begin Building Elementary School

Electors of the West Bend school district last Thursday emphatically supported a \$10 million bond issue referendum, by 2,705 to 1,443 margin, even more decisively than the predominance of the "no" vote last May when 2,470 rejected a \$4 million bond issue and only 1,405 favored it.

The irony that an outsider might visualize in this complete reversal, despite the larger cost amount involved is not evident locally, perhaps, mainly because the approved bond issue is an overall three-phase, five-year building program, culminating months of well-organized planning by many.

A break-down of the voting, by polling place, follows:

#### VOTE BREAKDOWN

City Hall, (first, second and sixth wards) - 741 yes; 470 no.

High School (third, fourth and fifth wards, towns of Trenton and West Bend) - 1,513 yes; 593 no.

Barton village hall (Seventh ward; towns of Barton and Addison) - 229 yes; 265 no.

Jackson village hall - (towns of Jackson and Polk) - 222 yes; 115 no.

It was interesting to many to observe that the vote at the high school was almost 3-1 in favor of the referendum, as compared with these figures from the last referendum: 822 to 1183, for and against, respectively. Although the new referendum did not carry at Barton, the margin was far closer than it was last May when the "no" vote was almost five times greater than the "ayes."

(Continued on Page 7, Col. 2)

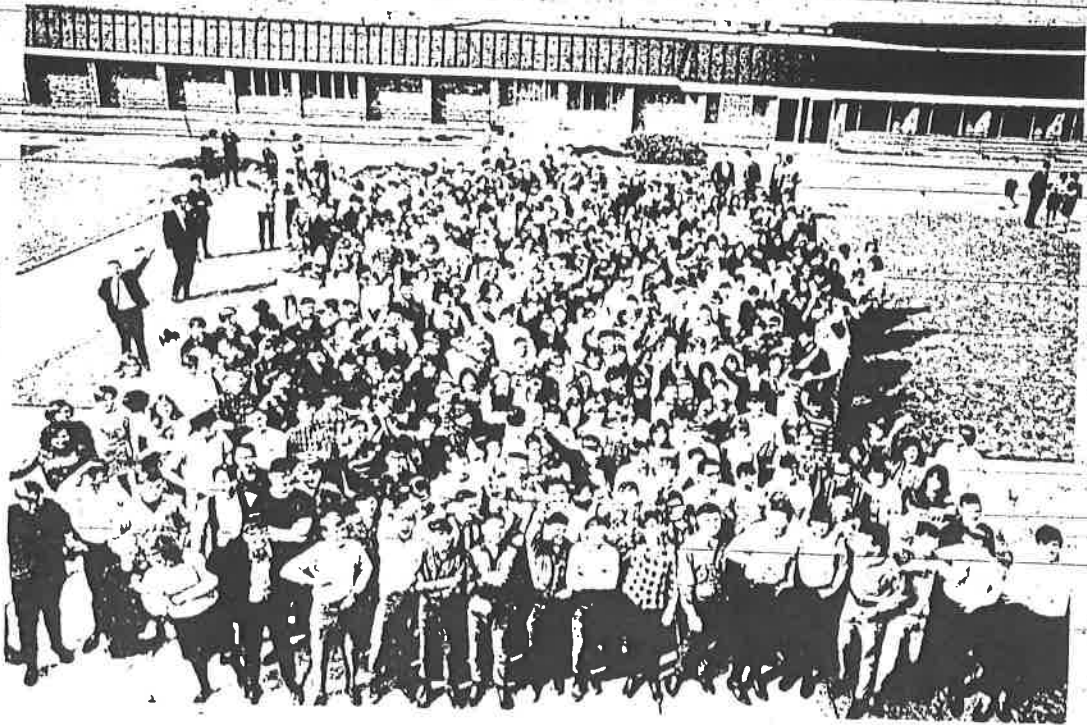
### Local American Legion to Host County Council

#### Dinner, Election of Officers Scheduled

The LT, Ray Dickop American Legion post No. 36 of West Bend will host the Washington County Council American Legion meeting this Saturday evening, March 23, at the West Bend-Barton Sportsmen club. All legionnaires in the county, their ladies and auxiliary members are invited.

The event will begin with a cocktail hour at 6 p.m., followed by a turkey dinner at 7 p.m. The meeting is scheduled to begin at 8 p.m.

Major business of the evening will be the election of officers



### Teacher Pay in West Bend Is Hiked over 10%

#### \$6,400 Base Pay Below Milwaukee's

The West Bend school board last night (Monday) approved a 10 to 14 per cent increase in teacher salaries, effective with the new contracts for September. The new salary schedule calls for a starting salary of \$6,400 for teachers with a bachelor's degree, a \$600 increase over 1967-68.

Other benefits granted to teachers included an increase in accumulated sick leave, due's deductions, and increased hourly rates for summer school and week-end pay. The board no longer will pay the \$100 a year "head of family" bonus, and negotiated a reduction in maximum pay for the teacher with a bachelor degree.

#### INCREASE OF \$300,000

A teacher's salary is based on the teacher's experience and education. With these increments, the increase for two-thirds of the teachers will be 14 per cent while one-third will receive the 10-per cent increase. Administrators received an average of eight per cent.

For the next school year...



News Media to

A PRECELEBRATION was held them of this fact



14

Dean Maxwell also issued a report on the courses and activities which the center will offer this fall. They include: General anthropology, basic drawing, art survey, creative design, general chemistry, principles of economics, elements of descriptive geometry, fresh-

At 3:30 p.m. Sunday the Jackson firemen were again called out for a chimney fire at a residence occupied by Mrs. Sor-wild at the junction of Hwy. 150 and M. Firemen extinguished the blaze and returned to the station. There was no damage. Chief

arie Missione, Red Bank, N.J.

What of consumer  
in Wisconsin? What  
And where are we  
he tell you a little at





# West Bend News

THURSDAY  
MARCH 14, 1968

THREE SECTIONS

PUBLISHED EVERY TUESDAY AND THURSDAY AT WEST BEND, WIS: 53095

Single Copy 7c

NUMBER 21

## Restoration of Cedar Creek Up on Mar. 20

Annual Meeting at  
Cedarburg Bank

The work of the Cedar Creek Restoration Council is to be continued if the recommendations of the organization's executive committee are accepted by the general membership at the annual meeting to be held Wednesday, Mar. 20 at 8:00 p.m. at the Cedarburg State Bank building.

According to Delbert J. Cook, chairman of the group, "the pollution clean-up of domestic and industrial waste is about completed; however, major tasks are ahead to reduce the ruinous discharges from both the Cedarburg and Jackson sewage treatment plants. In addition, creek deterioration from street and land runoff and man-made obstructions remain on the unfinished business list."

Cook further stated that proposals for 1968 include participation in the City of Cedarburg "Creek Clean-Up Day" activities, completion of reconstruction work in Covered Bridge Park, inauguration of the Cedar Creek Canoe Trail and the top-to-bottom survey of creek problems Saturday, Apr. 27.

Officers for the coming year are to be elected at the Mar. 20 meeting. Also to be considered are the urgent matters of local and county government cooperation in stream and lake restoration with emphasis on local health officer inspection and enforcement of local and state laws.

A special showing of the movie "Cedar Creek 1966 - A Small Fight In A Big War" portraying the work of the group and its problems is to be given at 7:15 p.m. prior to the business meeting. The general public is invited to see the film which has been featured throughout the state.

## Paul Humbel to Enter Race for County Sheriff

Reveals Candidacy  
At GOP Caucus



THE MOUSETRAP, by Agatha Christie, opened at the Masonic Temple last weekend, where the Musical Masquers performed to an appreciative audience on Friday and Saturday evenings. The drama will continue this week-

end, with performances on Friday and Saturday, at 8:15 p.m. Making up Louis Warnecke (who takes the role of Mr. Paravicini) is Carmen Olsen. See additional pictures elsewhere. — News Staff photo

## County Supervisors Study Use of Old County Buildings

May Offer Office,  
Living Quarters

Members of the Washington county board of supervisors Tuesday, in an all day session, acted on seven resolutions and various reports brought before the board. Lengthy annual reports of the Department of Social Services (formerly the Welfare department) and the highway commission were presented.

A resolution authorizing the appropriation of \$10,000 to hire an architect or building engineer to study the feasibility of remodeling or converting to use the old county home and hospital buildings for office space or living quarters was referred to the public property committee for study and consideration after Supervisor Cornelius Gundrum of the T. of Addison suggested such disposition of the measure. Action is being taken

tion of the contemplated courthouse wing, planned in the original courthouse plans, at the same time to give the supervisors a comparison of remodeling costs on the old buildings and possible new construction in the event remodeling costs became prohibitive.

Supervisor Fred Sager said the Social Services department should not be overlooked as potential "tenants" for the building as the department also required additional space.

Adolph Schmidt, chairman of (Continued on Page 4, Col. 1)

## Dave Wolf to Head '68 United Fund Drive Here

Dale Hafeman, president of the West Bend Community Chest, has announced the election of

## WB District Voting Today On \$10 Million

To Decide Fate of  
3-Phase Program

West Bend school district voters today (Thursday) will either accept or reject the recommendations of the West Bend board of education and administration for a proposed \$10 million school construction program. They will determine the future of a proposed three-phase five-year program that has been in the planning stages for months.

It was just 10 months ago, in fact, that electors defeated a \$3,950,000 referendum to build a new high school (under the 2-2 plan) for 1,350 students, by a margin of 2,470 to 1,405. And nearly a half year earlier, voters defeated a \$4,295,000 referendum for a new high school, 2,184 to 912.

### OUTLINE PROGRAM

At stake in the 3-phase program are:

First phase - March 1968 to September, 1968 - Old high school repairs, Decorah addition, Jackson addition, new elementary school (Audermauer site) for 480 students; Barton repairs and McLane repairs.

Second phase - June 1969 to September - 1970 - New 9-12 "schools-within-a-school" high school and Barton addition and remodeling.

Third phase - June 1970 to September 1971 - Remodeling of old high school plant as a middle school and purchase of additional elementary school sites.

(A breakdown of the cost figures was given in the special tabloid that was mailed out early this week.)

The twin high schools would house 2,500 students and be readily expandable on a 55-acre site on E. Decorah road.

### ADD 450 PER YEAR

Enrollment in the district has been increasing about 450 students per year. During the next five years, from 1968 to 1972, school enrollment is expected to grow from 4,878 to slightly over 7,000 at all grade levels.

The impact on the taxpayer of the school building program was termed as "less than originally expected." There will be a 1.11 mill average increase in 1968, 1969 and 1970. By 1970 the total mill rate will be only 3.47 mills for the ten million dollar issue, plus the present indebtedness. This represents \$11.10 cost per \$10,000 of equalized valuation in 1968; \$27.90 in 1969 and \$34.70 in 1970.

The polls for the referendum will be opened at 7 a.m. and will be closed at 8 o'clock in the evening.

POLLING PLACES

## Wanders Onto Ice on River, Boy Drowns

A West Bend area boy drowned Tuesday afternoon when he apparently wandered onto the Milwaukee River and plunged through the ice.

Victim of the mishap was Gerald Winkler, five year old son of Mr. and Mrs. John Winkler who reside on scenic dr., R. 6, West Bend.

The mishap occurred at the rear of the Woolen Mills store, on Hwy. 33 east of the city, which is operated by the boy's father. The boy apparently wandered off from the store area onto the river ice behind the building and plunged through the ice into the water which is from six to eight feet deep in the area.

### RESCUE SQUAD CALLED

The rescue squad was summoned at 5:37 p.m. after a search for the youth proved futile. Members of the headquarters fire station responded immediately and the body was recovered at 5:46 p.m.

Fire Chief Oelhafen said seven members of the rescue squad were on the scene to assist in rescue operations. Firemen Al Pennies and Chet Schmidt recovered the body by using grappling hooks, Chief Oelhafen said. The accident occurred immediately off shore and the body was



high school building, designed for 2,500 students and using a "schools-within-a-school" concept, were presented to the

costs of the building project in adjoining story. Information meetings to explain the 3-phase district's building program have

schools. The bond issue referendum date is March 14. Enrollment in the district is presently increasing about 450 students per year.

# Plans Are Presented for Proposed New High School

## Facts, Figures on 2,500-Student Building Given

### Hold Info Meetings On District Plans

The plans for the proposed new high school were presented to the Board of Joint School District No. 1 this week. William J. Scheide-mantel, the architect in charge for the architectural firm of Childs and Smith, presented drawings and a perspective view. (See adjoining sketch and floor plans on inside page).

The proposed new high school is planned with a design capacity of 2,500 students in grades 9 through 12, utilizing a "schools-within-a-school" concept. Two academic schools, identical in plan, each will accommodate 1,250 students in these four grades. The schools will have facilities for physical education, pre-vocational subjects, art, music, and a community auditorium.

Each academic building will be a complete school and will have its own classroom areas for English, social studies, languages, mathematics, science and its own library-resource center, teacher preparation areas, administration and guidance office, activity center and cafeteria. The school is designed to be flexible in

interior arrangements so as to encourage individual and group work among students and teachers and to provide facilities for a modern educational program.

### READILY EXPANDABLE

It is planned to be readily expandable in the future. Interior spaces in classroom and special areas have been planned to provide maximum flexibility to allow for future educational program changes.

The building is two-story and has a contemporary design. It will be non-combustible and designed for low maintenance costs and overall economy. The building will be concrete block, faced with brick and pre-cast concrete panels. A steel beam and column system will be used.

(Continued on Page 3, Col. 1)

## Hospital-Home Officials Will Attend Course

### Session Slated at State University

Arnold J. Korth, superintendent and Evelyn M. Korth, R.N., assistant superintendent of the Washington county hospital and home, will be among 25 county hospital superintendents who will be participating in a training course in hospital administration in Madison Feb. 26 - Mar. 1.

The program is being held at the Wisconsin Center, University of Wisconsin. Sponsors are the Association of Wisconsin County Hospitals and the Division of Mental Hygiene, State Department of Health and Social Services.

### THREE YEAR PROGRAM

The program is being planned for a three-year period. Each year's course will encompass two weeks of concentrated course work, one in February and another in July, and four one-day sessions to be programmed on the basis of one follow-up session every other month.

The first year's course will concentrate on the following administrative areas: Decision Making in Hospital Administration, Personnel Management, Organizational Relationships, Communications, the Budget Process, and Statistical Concepts for Administrators.

### MANY INSTRUCTORS

Instructors for the course will be coming from the University of Minnesota, University of Iowa, University of Wisconsin - Madison and Milwaukee and the Division of Mental Hygiene.

## Rescue Squad Aids Rural Area Woman

The fire department rescue squad from the No. 2 station on Barton ave. was called out at 9:11 p.m. Monday when Mrs. Leona Dricken, R. 3, West Bend, apparently had a choking spell and had difficulty in breathing.

Firemen administered oxygen therapy and first aid and transported her to St. Joseph's Community hospital where she was treated and later released.

## Mallard Names Midwest Area Sales Manager



WAYNE NEWBERRY

Wayne Newberry of Elkhart, Ind., has been appointed regional sales manager for the midwest by Mallard Coach Corp. of West Bend, manufacturer of travel trailers, tent campers and snowmobiles.

In announcing the appointment, Web W. Ilron, Mallard vice-president-marketing, explained that Mallard's expanding dealer network, along with increased demands for Mallard products, has made greater territorial coverage necessary in order to better serve Mallard dealers and customers.

Newberry is a native of Moose Jaw, Saskatchewan, Canada, where he graduated from St. Louis College. Before coming to Mallard Coach, Jan. 1 of this year, he was sales manager for Royal Norton Manufacturing Co., which specialized in the manufacture of a complete line of lighting fixtures for the mobile home, travel trailer and camper industry. Previously, he was with the Indiana Bell Telephone Co. in sales and promotions.

Newberry resides with his wife and family at Elkhart, Ind. He will headquarter at Elkhart and cover the midwest states of Indiana, Michigan, Ohio, Kentucky, Illinois and Wisconsin.

## Jackson Firemen To Hear Dean of Local UW Center

Dr. Harry J. Maxwell, dean of the University of Wisconsin Washington County Center, will speak at the Jackson fire department's annual dinner, Saturday, Feb. 24, in the Jackson village hall.

Dean Maxwell will speak about the new center, scheduled to open next September, its role in the community, and the multi-campus-University Center System. A question and answer session will follow.



"BROTHERHOOD Strikes Again" is the title of a skit being given by this trio at the Barton elementary school this week. Fifth and sixth graders are giving skits and reading stories pertaining to brotherhood to all first- and second graders in the library during story time.

The threesome checking over their script are, from left: David Spang, as a Chinaman; Ricky Konecke, as a Negro, and Bruce Bohren, as a Mexican.

Each morning original mottoes, poems or thoughts on what Brotherhood week means will be given over the loudspeaker to all students, also by 5th and 6th graders. These activities have been prepared under the direction of Mrs. Pauline Schepens, language arts teacher.

Two of the three ISP students at West Bend high were slated to speak at the school yesterday (Wednesday). — News Staff photo

## Local KCs Host For Brotherhood Session Tonight

The fifth annual Brotherhood meeting of the West Bend Loyal Order of Moose, Masonic Lodge and the Knights of Columbus will be hosted this year by the local Knights of Columbus, Council 1964 at the Moose Lodge at 8 o'clock tonight (Thursday). Guest speaker will be Father Francis Scandell, OFM Cap. of St. Anthony in Marathon, Wis.

All members of the Moose, Masonic Lodge and KCs are invited to hear his informative talk on Brotherhood.

Refreshments will be served.

## Scout Chili-Supper Scheduled Sunday at St. Francis Cabrini

A chili supper will be served at the St. Francis Cabrini gymnasium this Sunday, Feb. 25 from 3 to 7 p.m. The event is being staged for the benefit of Boy Scouts of Troop 96 and Cub Scout Pack 96. Area residents are invited to attend. Admission is \$1.25 for adults and 60 cents for children. Guests are invited to "eat all they like."

## Jackson Firemen Extinguish RR Fire

Members of the Jackson volunteer fire department were called out at 4:30 a.m. on Tuesday to extinguish a fire along the Chicago & North Western railway right-of-way, approximately two and half miles south of Jackson at Jackson dr.

The blaze, which apparently started from sparks from a passing train, burned over several acres as well as fence posts and telegraph poles in the area before it was brought under control. Firemen were at the scene about an hour before the fire was extinguished.



## Chas. Lockwood Receives Rating Of Eagle Scout

Charles Lockwood was presented with his Eagle Scout award at the West Bend Troop 21 Court of Honor on Feb. 14. The award was made by Darrell Händley, the Marsh Moraine district scout executive. Charles joined Troop 21 in 1964 and advanced to first class rank by November, 1967. He received his Star Scout award in November, 1963, and a Life Scout award in October, 1966.

Charles has been very active in the troop, serving as patrol leader and senior patrol leader. At summer camp, he was instructor for several Merit badges. He was initiated into the Order of the Arrow in 1967. Charles is a charter member of Explorer Post 21 which was established in November, 1967, by the Jaycees.

## Poverty in Inner Core Topic for Lecture Sunday

### First in Series of Lenten Programs

A look at poverty in the inner core of American cities will be the first topic of the Lenten Christian Understanding Program, sponsored by the West Bend Council, No. 1964, of the Knights of Columbus.

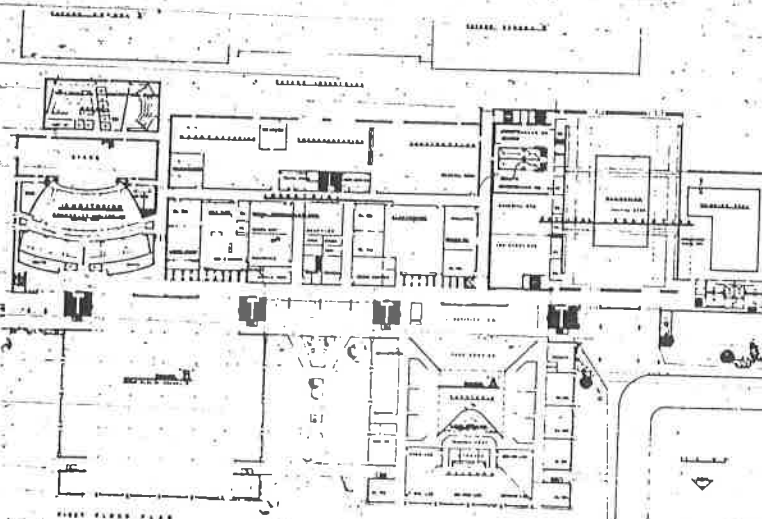
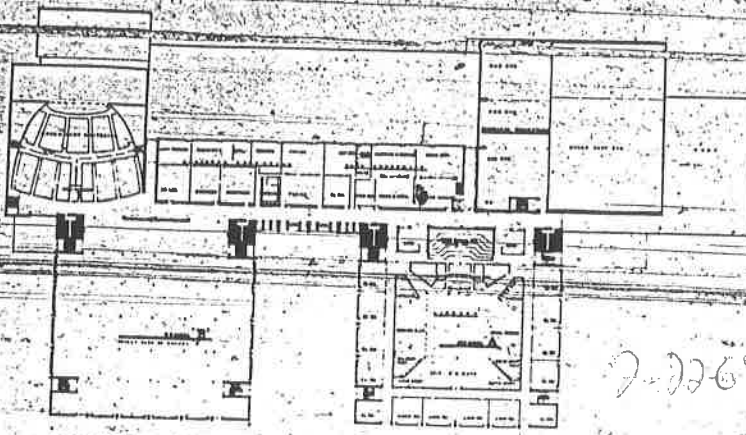
On Sunday, Feb. 25 at 8:00 p.m. at the West Bend high school, Henry A. Foley, assistant administrator over inner-city development projects for the Office of Economic Opportunity, will offer a look at poverty in the inner core of American cities and its effect on the people in and around the inner core.

Foley was born in Boston. He holds a Bachelor of Arts from St. John's college in Los Angeles, a Master of Science degree in Urban affairs from the University of Wisconsin-Milwaukee, and a Master of Arts from Marquette University. He is presently the supervisor of five neighborhood opportunity centers in the inner core of Milwaukee.

Everyone is cordially invited to attend this free series. There will be a short intermission to allow the audience to submit written questions to the speaker. The program is slated to close at 9:30 p.m.

Refreshments will follow the program.

# Floor Plan for Proposed West Bend High School



## New High School

(Continued from Page 1)

The school is designed for year-round utilization with community and after-school student use encouraged. Arrangements of exits, toilets and corridor closures as well as outdoor facilities, are planned for maximum availability for public use.

The building plans have had preliminary approval by the Industrial Commission and by the Department of Public Instruction.

### GENERAL FACTS

Student design capacity - 2,500.  
Building gross area - 335,000 sq. ft.

Estimated construction cost - \$6,365,000.

Estimated construction cost/sq. ft. - \$19.

Estimated construction cost/student - \$2,546.

Approximate sq. ft./student - 134 sq. ft.

### ESTIMATED PROJECT COSTS

Construction cost - \$6,365,000.

Equipment (fixed and movable) - \$750,000.

Site improvement allowance - \$250,000. (Grading, drainage, seeding, drives, walks, parking and development).

Fees and miscellaneous costs - \$335,000. (Architect and engineering fees, survey and testing fees, legal fees).

A referendum has been set up for Thursday, March 14. Information meetings to explain the 3-phase building program (including new elementary school, additions, repairs, etc.) have been scheduled at various schools.

Health and Beauty

## Questions About Our Schools

(Editor's Note - Questions for this column should be submitted directly to Donald H. Peckenpaugh, superintendent of the West Bend district public schools. Responsibility for the selection of the questions and for the opinions expressed are those of the superintendent, not of this newspaper.)

### How Were "Frills" Avoided

(See additional column in today's News)

QUESTION: In what way have you avoided "frills" in the plans for the new high school?  
ANSWER:

between the two schools. In this way, the two schools will be worthy competition for each other and neither school will become a "prestige" school in sports or socially.  
QUESTION:

## Note Upswing In Appliances In Area Homes

### Large Increase in Cars Also Reported

(Special to the News)

Judging from the number of "big-ticket" household accessories acquired by Washington county families in the last few years, local residents are living it up as never before.

Their outlays for refrigerators, home freezers, automobiles, dishwashers, air conditioners, stereophonic equipment and the like have climbed steadily since 1960.

The extent to which ownership of cars and of household appliances has increased in the period from 1960 to 1967 is based upon special sample surveys made by the Department of Commerce.

In Washington county, on the strength of these findings, no less than 93.8 percent of the local families are owners of one or more cars at the present time. This is an increase over 1960, when 91.1 percent had cars.

### MORE WASHERS

In other parts of the United States, some 78.4 percent are car owners and, in the East-North Central States, 81.2 percent.

Similarly, more homes are equipped with washing machines than was the case in 1960. Ownership in the local area is now listed at 88.1 percent.

Actually, a larger proportion of homes have washing machines than is indicated by these ownership figures, since many rental units are equipped with them.

The same is true for air conditioners. In more and more rental units they are provided as standard equipment.

### MORE CLOTHES DRYERS

Clothes dryers have also come into more general use in the area. The figures show a rise of 37 percent since 1960.

As for television sets, there has been a marked increase in number in the period covered by the survey. Some 97.9 percent of the households locally now have one or more sets, as compared with 94.2 percent previously.

Also reported, for the regional area, were sharp increases in dishwashers and in radio and phonographic units.

These and other high-priced pieces of equipment, which help life easier or add to the enjoyment of living, have been coming within reach of a growing number of local families.

## SHORT AND SWEET



We hear that traffic accidents and fatalities in Britain have declined, in some areas sharply, since the government introduced legislation to curb drunken driving. Much of the sharp drop in the accident rate came with people driving less at night because of the restrictions imposed on social life by the breathalyzer tests. Where there is no direct proof that the new breath test for drivers is the reason for the falloff, during the first month of the breath tests there was a drop of more than 100,000.

## Odd Fact

A national weather forecaster in Madrid, who told his audience he'd shave off his mustache if it didn't rain the next day, wept and his mustache remained dry removed. A mustache he'd been wearing for 20 years.

PAID ADVERTISEMENT: A Henke, Sr., 703 S. 7th ave.

VOT  
Stability and U  
Elect Paul  
in the March 5  
A man who truly knows  
YOUR VOTE AND SUPPO

Sea

Sears



GUARANT  
36-MONT

Regular \$16.99 Wit

Priced From 13

Make—Plymouth	Sale Price Wit
Year—Model	36-mo 24-mo
All '56-'67 standard models	13.99 15.9
Optol hy. duty models '56-'67	14.99 17.9
Vallant, All '60-'67	13.99 15.9

Other Batteries to Fit Most American Cars

Drip



# Department of Public Instruction GENERAL FACTS

Student design capacity - 2,500.  
Building gross area - 335,000  
sq. ft.  
Estimated construction cost -  
\$6,365,000.  
Estimated construction cost/  
sq. ft. - \$19.  
Estimated construction cost/  
student - \$2,546.  
Approximate sq. ft./student -  
134 sq. ft.

## ESTIMATED PROJECT COSTS

Construction cost - \$6,365,000.  
Equipment (fixed and movable)  
- \$750,000.

Site improvement allowance -  
\$250,000. (Grading, drainage,  
seeding, drives, walks, parking  
and development).

Fees and miscellaneous costs -  
\$335,000. (Architect and engineer  
fees, survey and testing  
fees, legal fees).

A referendum has been set up  
for Thursday, March 14. Information  
meetings to explain the  
3-phase building program (in-  
cluding new elementary school,  
additions, repairs, etc.) have  
been scheduled at various  
schools.

## Health and Beauty

We have been told that it is  
healthy to know how to give vent  
to our anger. Even more, the  
ever-agreeable child reared in a  
home in which hardly an angry  
word is spoken may develop an  
emotional problem in common  
with the child reared in a  
turbulent household. He may  
reach adulthood without learning  
how to express anger articulately.

The result of this inability  
may express itself in terms of  
physical discomfort or malfunction.  
Some medical men say that  
inner tension will contribute to  
such illness as hypertension,  
heart disease and cerebral  
vascular disease. One doctor  
compared this anger to the steam  
in a kettle on which the spout  
is sealed.

Inner tensions will rob a per-  
son of sleep. Many people fight  
a battle each night after the  
light is turned out, thinking what  
they should have said but didn't.  
This is not constructive thinking.  
We are told that everyone suffers  
from this mental pattern to some  
extent. Perhaps you can console  
yourself with the fact that many  
of the world's outstanding people  
have this problem in common with  
you.

Many skin troubles have their  
basis in the emotions. The push,  
hurry and rush of modern life  
all add to our mental problems.  
Tension robs your complexion  
of valuable material oils that  
help retard the aging process  
of the skin.

All things considered, one of  
the most valuable gifts you can  
give your family is a healthy  
mental outlook. Without this, it  
is impossible to enjoy life.

## Questions About Our Schools



(Editor's Note - Questions for  
this column should be submitted  
directly to Donald H. Pecknough,  
superintendent of the West Bend  
district public schools. Responsibility  
for the selection of the questions  
and for the opinions expressed are  
those of the superintendent, not of  
this newspaper.)



## How Were "Frills" Avoided

(See additional column in to-  
day's News)

### QUESTION:

In what way have you avoided  
"frills" in the plans for the new  
high school?

### ANSWER:

There are many ways in which  
we have attempted to save tax  
money. Just building the two high  
schools together with shared fa-  
cilities is a great savings in the  
avoidance of duplication. But,  
there are more obvious ways.  
Each space in the new high school  
is planned for multiple use. For  
example, the cafeteria can be  
converted into instructional areas  
after the lunch period. In this  
way, the whole building is used  
the entire day. Also, we have  
avoided including anything just  
for decoration -- there are no  
expensive courts or plantings.  
In addition, planning has made  
it possible to utilize more space  
for instruction by minimizing  
hallways.

### QUESTION:

Why did you choose a two story  
plan for the high school?

### ANSWER:

We looked seriously into one,  
two and three floor plans. For our  
purposes the one floor plan was  
uneconomical and too spread out.  
The two floor plan brought com-  
pactness and savings in land use,  
plumbing, toilets, and roof area.  
The three floor plan introduced  
a different style of construction  
(due to building codes) that made  
it much more expensive. Also,  
we chose the two floor plan be-  
cause it was the most efficient  
for our educational purposes.

### QUESTION:

How will you determine which  
children should attend each of the  
two high schools?

### ANSWER:

We are going to keep the two  
schools carefully balanced as to  
the number of boys and girls,  
city and country children. We will  
also spread the talented children

between the two schools. In this  
way, the two schools will be  
worthy competition for each other  
and neither school will become a  
"prestige" school in sports or  
socially.

### QUESTION:

Isn't the transportation to one  
big high school too costly?

### ANSWER:

In order to show a substantial  
saving on transportation, we  
would have to build at least three  
high schools in the city of West  
Bend to avoid inner-city busing  
at the high school level. But,  
three high schools could not have  
the variety of offerings that one  
large high school gives. In ad-  
dition, the system must run  
buses throughout the district to  
bus the middle school, elemen-  
tary and parochial students. The  
law requires us to run the buses  
anyway whether we add some high  
school students or not.

### QUESTION:

Why was the Decorah site used?

### ANSWER:

This year, seventeen different  
parcels of land were reviewed as  
possible sites for the new high  
school. The Decorah site was the  
only one in the district that was  
large enough, was close to access  
roads, had sewer and water ser-  
vice and was available. Most  
other suggested sites turned out  
to be too small or to have access  
problems.

### QUESTION:

What will the basic construc-  
tion materials be for the exterior  
of the high school building?

### ANSWER:

The building will be of masonry  
construction. It will be primarily  
of brick construction with some  
pre-stressed concrete panels.

## Words of the Wise

The measure of success is  
not whether you have a  
tough problem to deal with,  
but whether it's the same  
problem you had last year.

—(John Foster Dulles)

area, were sharp increases in  
dishwashers and in radio and  
phonographic units.

These and other high-priced  
pieces of equipment, which help  
life easier or add to the en-  
joyment of living, have been  
coming within reach of a growing  
number of local families.

## SHORT AND SWEET



We hear that traffic acci-  
dents and fatalities in Britain  
have declined, in some areas  
sharply, since the govern-  
ment introduced legislation to  
curb drunken driving. Much  
of the sharp drop in the acci-  
dent rate came with people  
driving less at night because  
of the restrictions imposed on  
social life by the breathalyzer  
tests. Where there is no direct  
proof that the new breath test  
for drivers is the reason for  
the falloff, during the first  
month of the breath tests  
there was a drop of more than  
10% over last year. There was  
a drop of 42% in accidents be-  
tween 10 p.m. and 1 a.m.

★ ★ ★

Many people seem to feel  
that all foods in their "natural"  
state are healthful, or at least  
harmless, while substances  
added to foods are "chemicals"  
and therefore suspect. Whether  
a substance is "natural," or  
has additives in its final com-  
position, has nothing much to  
do with whether it is toxic.  
Even honey may be poisonous  
when bees collect it from such  
plants as mountain laurel. No  
substance is so harmless but  
that some large quantity is  
toxic; none so toxic but that  
some very small amount will  
have no toxic effect on a given  
consumer.

★ ★ ★

The first sunglasses were  
most likely, devised for the  
protection against snow glare,  
rather than summer sun.  
Primitive Eskimos formed  
crude sunglasses from bone,  
with a horizontal slit reducing  
the amount of light entering  
the eye. Snow enthusiasts  
should be reminded of this.

Many men practice economy  
by preaching it to their wives.

## FREE HOSPITAL EQUIPMENT

West Bend VFW Post 1393  
GILBERT M. SAUER  
1104 Walnut St. Tel. 334-5288  
01-W-41

SHO  
Sat



# West Bend News

THURSDAY

FEBRUARY 15, 1968

TWO SECTIONS

VERY TUESDAY AND THURSDAY AT WEST BEND, WIS. 53095

Single Copy 7c

NUMBER 13

## Social Security Increase \$645,000 County Area Increased Benefits Aid Residents

(Continued from Page 1)  
YORK. — To what extent a boost in social security benefits, recently voted by Congress, will benefit residents of Washington county? How much will benefit checks in the local area increase under the new law? The basis of the latest from the Social Security Administration, which show the of local recipients and that they were receiving beginning of 1967, the new will be approximately \$645,000 per year than before. The board increases are for retired or disabled and their dependents, who have been getting benefits of \$528 per month now receive \$660. For there will be an increase in the minimum from the \$798 to \$990.

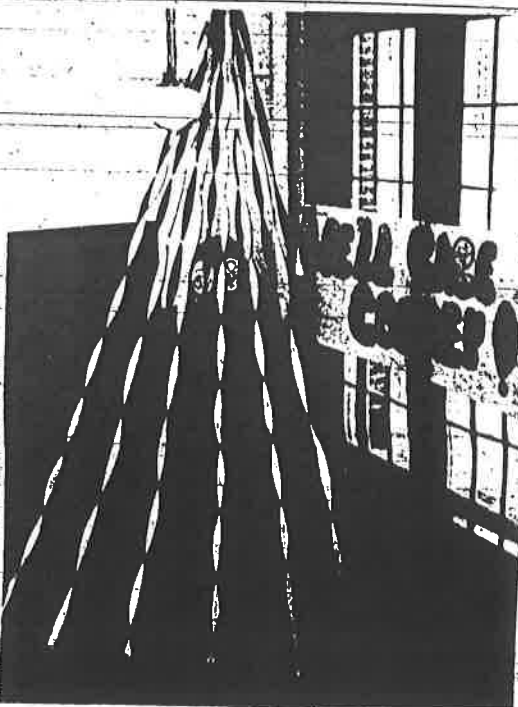
**PAYMENTS TO RISE**  
Upper end of the scale, whose monthly salaries are \$550 or more during the working years, the payment for an individual from \$2,016 to \$2,279. A retired couple, it will go from \$24 to \$3,419.

Size of the pension a worker receives is directly related to the amount he earned during the period of years prior to retirement and, in turn, to his contributions to the pension fund. Washington county, according to its latest annual report on Social Security Administration on Page 9, Col. 3)

## KCs Will Sponsor Lectures Open at School Feb. 25

West Bend council of the Catholic Church, in cooperation with area clergymen, will sponsor a Lenten series of lectures.

Feb. 25 at 8 p.m. and at two week intervals, of lectures will be held at West Bend high school. The timely topic for a will cover Christian values of Our Day. This is selected from local area clergymen and the department of Marist University. **ST. SPEAKERS** speakers, who are involved in these problems, will be: Rev. 23 — Hank Foley of Economic Opportunity; Judge William C. Callahan; circuit court will be Parental Re-



**CORRIDORS** of West Bend high school are decorated as thoroughly as a Christmas tree during the current "Pep Week," aimed at stimulating student spirit and interest in the school's athletic events. A mere sampling of the work that has gone into the project, sponsored by the Student Senate and Cheerleaders, appears here. Each class decorated a different section of the building. They were to be judged yesterday (Wednesday).

Competing for a "Spirit Jug," the classes yesterday also sold "Go, Go Badgers" class buttons, and today they'll conduct mock funerals for Oconomowoc and Hartford, the basketball team's opponents on Friday and Saturday evenings. On Friday there'll be a yelling contest at the pep assembly and the Jug will be awarded.

See details on athletic events on sports pages.

— News Staff photos

## UW Centers' Faculties

## Dollar Day Sale Starts Today at West Bend Stores

A city-wide February Dollar Days sale will be held at West Bend stores beginning today (Thursday) and continuing through Friday and Saturday, Feb. 15, 16 and 17.

Merchants throughout the city are cooperating in this big sales event and thousands of items of merchandise are being offered at tremendous savings.

Residents from throughout the area are urged to consult the many advertisements in today's issue of The West Bend News and to take advantage of the many bargain items offered.

The three day sale is being sponsored by the West Bend Business Association. All merchants extend a cordial invitation to area residents to visit their stores and look over their tremendous array of bargains.

## Milwaukee River Survey, Clean-up Planned in Area

### To Outline Plans at Session Tonight

An initial meeting to lay plans for a comprehensive survey "of every mile of the Milwaukee river in Washington county" will be held at 8 o'clock tonight, Feb. 15 in the auditorium of the new Washington county courthouse. Plans are being made to have crews of adults and Scouts and

## Give Financial Details, Impact On Referendum

### Seek School Bonds For WB Projects

(See Graph on Page 9)  
Financial details concerning the ten million dollar bond issue proposed for the March 14 school referendum were released today by the T. G. Evensen Bond Consulting firm of Minneapolis.

The impact on the taxpayer of the proposed 3-phase school building program of Joint School District No. 1 was revealed to be substantially less than originally expected. Although next year's tax for the average residence in West Bend (whose equalized valuation has been established at \$13,800) will be increased by \$15.31, the actual increase for 1968 will be only \$7.17, because of an increase in district valuation, utilization of invested earnings from bond sale, and reduction in current debt.

This average homeowner will pay \$38.50 in 1968, \$47.88 in 1970, \$44.02 in 1975, and \$40.57 in 1980 for this total building program.

### OVER 44-YEAR SPAN

The cost of the total building program for the next five years, including the new high school, a new elementary school, additions to three elementary schools, remodeling of the old high school into a middle school, and repairs and remodeling of three schools will be ten million dollars. This will be borrowed as needed over a four year construction period.

Mrs. Margaret Nielsen, president of the board stated, "The nationally known municipal bond consulting firm of Evensen and Associates has studied and prepared various plans of the financial impact of the bond issue necessary to finance the facilities. They have recommended, and it is the intent of the school board, to sell bonds only as they are needed to meet the cost of each phase of construction."

### TO SELL IN '68, '69, '70

Some of the bonds authorized will be sold in 1968, part in 1969, and the balance in 1970. This will result in approximately a 1.11 mill average increase per year for the years 1968, 1969 and 1970. By 1970, the total mill rate will be 3.47 mills for the \$10,000,000 bond issue.

The total mill levy requirement needed to pay principal and interest on all old bond issues in 1968, plus the requirement needed to pay on the first of the bond issues, will result in only a 0.52 mill impact on taxes. In 1969, the mill levy for the new debt will be 2.79; in 1970, (Continued on Page 9, Col. 1)

## Parents of Local Resident Killed In Florida Crash

## Electors

(Continued from Page 1)

2. Old High School repairs - Ongoing essential work to be done by September, 1968 and remodeling later. Color slides were shown dramatically point out some of the repair and remodeling needs in the old part of the high school and in other older school buildings. Peckenpaugh said that much of this work (roof, plumbing, lighting, etc.) has been put off because the question has been, when is the logical time to do it?

As an example, some lockers are in such poor condition that there have been a few times when students "can't even get their lockers out of them."

3. Decorah School addition - September, 1968 (propose two kindergarten rooms plus seven classrooms and supporting facilities for 239 additional students).

4. Jackson School addition - September, 1968 (propose one kindergarten plus five classrooms and supporting facilities for 104 more students).

5. Audermuer Site - New elementary school for 480 - September, 1968. (Propose three kindergartens plus 13 classrooms and supporting facilities). This site is located on the northwest side of the city, one of the fastest growing areas at the present time, the superintendent noted.

6. Barton School repairs - September, 1968.

7. McLane School repairs - September, 1968.

### SECOND 'MIDDLE SCHOOL'

The second phase of the program would include a Barton school addition and remodeling, by September 1969, and remodeling of the old high school plant by September, 1971. The latter would be partially used as a middle school during remodeling (for about 350 students). The old high school building would be used as: 1. Middle school; 2. Buffer for elementary; 3. Central office facilities.

Purchase of land for future expansion in the Jackson and Silver Maple areas, plus one other site, would form the third phase of the building program.

Electors of the district defeated a bond issue of about \$4 million last May, 2,470 to 1,403, and a few months earlier, in December, rejected a \$1,293,000 bond issue referendum, 2,184 to 912.

Mrs. Margaret Nielsen, director of the school board, introduced the fact-filled program, with Sup. Peckenpaugh giving the actual presentation.

### SURVEYS CONDUCTED

"We feel we now have our finger on the pulse of the community," Peckenpaugh said, as he pointed out the results of the opinion surveys taken to date, and more to come. The surveys revealed strong negative reaction to the previously defeated building as for the 2-2 high school plan; an auditorium that was too small; limited vocational facilities. It's then went on to point out areas where "some negative reaction" was evident and also "little or no negative reaction."

Further details on this and other surveys, including the one of the Washington County Central Labor Council's committee for more effective schools, will be analyzed and featured separately at a later date in the News.

The three main points in the WCCCLC high school survey results were as follows:

1. The majority of the electors polled favored a return to the 9 through 12 grouping of high school students as opposed

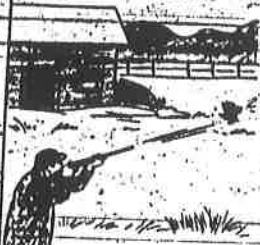
## Fur, Fin & Campfire

SOME DON'TS while out hunting...

DON'T CUT THAT FARMER'S FENCES. DON'T SHOOT AT HIS STOCK OR A STRAY CHICKEN.



DON'T LEAVE GATES OPEN WHEN PASSING THROUGH.



DON'T THROW PAPERS AND TIN CANS AROUND.



to the 2-2 grouping (9th and 10th grades at the present high school and 11th and 12th grades at the Decorah Road site) which was one of the key features in the referendum's rejection by the electors last December and May of this year.

2. Of those who expressed a return to the 9 through 12 grouping, most did so with the following reservations concerning the site or sites which would house this segment of West Bend's school population. In both written and oral comments to the Labor Council's census takers by the electors polled, the consensus of opinion was that either the present senior high school or the Decorah Road site could serve quite adequately as a 9 through 12 school facility. However, the electors felt that because of the nearness of the two sites to each other, only one site should be the location of a 9 through 12 senior high school. Most of the electors stressed a desire for another site either a considerable distance to the north or south when conditions warrant the need for a second 9 through 12 high school.

3. Quite a few of the electors expressed concern over the ultimate size of the student population. Many felt that 1,500 to 2,000 student population figure should be the absolute maximum for a senior high school. The proposed plans suggest a student population figure of approximately 5,000 students which would be contrary to opinions expressed in the high school survey.

### TO MEET WITH 'LABOR'

"We want cooperation from labor and their recognition of our trade and industrial program is essential," Peckenpaugh emphasized. He said he would be meeting with the labor groups in January and is hopeful that differences can be resolved. At Pittsburgh, part of Peckenpaugh's duties were in the role of planning consultant in the area of vocational guidance.

"We need specialists (architects) to come up with cost figures, before we can go into a referendum," Peckenpaugh said, but then estimating roughly that the minimum for the 'package' would be \$10 million. "But

as the district grows, so will the tax base."

After several questions were answered, one elector complimented the superintendent on a "beautiful presentation" and moved that the resolution be adopted and the meeting adjourned. "We've wasted too many years already...now let's get the show on the road," he said. "My ear is open," Peckenpaugh said, "tell me what you think." That, in essence, may be among the main reasons why the administration seems to "have its finger on the pulse of the community." The superintendent credits the many councils, committees and community expertise for the progress that has been made to date.



### WEILAND'S CLASSIC

ARM Tool & Metal Prod.	47
Block Chevrolet	43
Kilmer's	43
Hoke & Gunn	41
Carroll's Club	39 1/4
Schober's Cameras	38
Regal Ware, Inc.	36
Weiland's Recreation	30 1/4
Larry's Bar	30
Johann Plumbing & Heating	17
Old Timers	7
Schwemmer's Pontiac	6

### WEILAND'S MAJORETTE

Schaefer Oil	36
Weiland's Recreation	30
Mayer Insurance	29
Serene	27
Jon E. Nor	25
Local 912	20
Carroll's Club	18
West Bend Co.	16
Harbert's	12
Ralph's Standards	12
Newcomers Club	10
Schmidt's Carpets	11

### WEILAND'S SUNRISERS

Dakota Bowlers	23
Lauer's	14
Peters Resort	13
The Thrifty Three	10
One Hour Moving	10 1/4
W. B. Sewing Machine	10 1/4
Jerry & Jeanette's	10
Cry & Clark's Tap	10
Fairbanks Ind.	10 1/4
Fairbanks	10 1/4

### FRIDAY NIGHT COUPLES

Regal's Pote	27 1/4
Keyser's Motors	27 1/4
The Kracker	27 1/4
Hot Shots	25
Alley Cats	23
Gruesome	23
Lobosky's Comanches	21
Hill & Mrs.	20
Pick's Pin Pickers	19
Pin Pickers	19
Guys & Dolls	18
Eight Balls	18

### SWING SHIRT LEAGUE

Phil's Carpet Service	17
-----------------------	----

## 10th Anniversary Concert Set at Washington High

### Plan Christmas Event Dec. 20-21

The Washington high school music department, Germantown, will celebrate its 10th anniversary with a two-part Christmas Concert, to be presented on Wednesday and Thursday evening, Dec. 20 and 21.

Special invitations have been sent to each of the 76 "charter" members of the band and chorus which performed in Washington's first concert, 10 years ago, on Dec. 18.

Four choral groups, from the high school and the middle school, will perform on Wednesday evening, under the direction of Jerry Hogan. The Thursday evening program will feature the Warhawk band, the Cadet band, and the Junior Cadets, directed by Allan Wirth, who also directed the 1957 band and chorus, and by Paul McMillin, a graduate of the Germantown schools now in the position of assistant director of instrumental music.

While the emphasis will be on traditional Christmas music, a wide variety of music will be heard, including several of the numbers which made up the program of the 1957 concert.

### SIX TIMES AS MANY

Over 400 pupils will take part in this year's performance - a total of nearly six times as many as the number of participants 10 years ago.

Both performances will begin at 8 p.m., and tickets may be purchased, at 50 cents each or 75 cents for both concerts, from any performer, or at the door.

**FULET EGGS**, one normal-sized one weighing one and a half ounces and the other a giant, tipping the scales at five ounces, were brought in to the News office the other day by John Kopp, R. 3, West Bend. White-Rock pullets laid both eggs - News Staff photo.

## Hunting Report

The Horicon Zone goose season closed Sunday and the season in the remainder of the state will end Friday, December 15.

There still are about 60,000 geese in the Horicon Zone. The Rock Prairie area near Janesville which is outside the Horicon Zone has about 2,400 geese and Pine Island near Portage, also outside the Horicon Zone, has about 2,000.

Hunting success is low at both, as birds are not following any definite feeding patterns outside the closed portions of the two areas.

Bow hunters are experiencing good success during the late

# Penneys

ALWAYS FIRST QUALITY

## OPEN

Let Penne

Broadcloth Kingdor collar Penn-Prest Dacron® polyester/cotton tailored into short sleeve shirt with tapered body for trim fit. Just wash, tumble dry and wear. White. Short sleeves and long sleeves.

3.98

Oxford weave buttondown Penn-Prest Fortrel® polyester/cotton long point buttondown style with short sleeves. Never needs ironing! Stays smooth as new wash after wash. White. Short sleeves and long sleeves.

3.98

A fast enough



## Reported Taken

Burglars broke into the Silinger post office at 201 Kettle Moraine dr. in the village sometime early Wednesday, but apparently obtained only "petty cash" and a postal employee's transistor radio. An investigator for the Washington county sheriff's department indicated the loss was probably "under \$50" from postal clerks' cash drawers in the post office.

The break-in was being investigated by Chief of Police Ray "Bill" Silinger, Postal Inspector S. Haddix of the Milwaukee post office department and the county sheriff's department.

Inspector Haddix and police investigators said the burglars attempted to gain entrance through back door and side window, but were unsuccessful and finally forced the building by forcing open the front door.

**FAIL TO OPEN SAFE**  
It was believed that the break-in occurred after midnight, "possibly between 2 and 3:30 a.m. Tuesday."

Attempts to open the post office's main safe, a floor type, proved futile. But the burglars broke the combination off safe and thus postal employees, the inspector and investigators were unable to open unit immediately.

The break-in was discovered at 6 a.m. when Irene Salter of her, an employee of the office, came to work at 6 a.m. Tuesday and found the front door forced open.

Inspector Haddix, to whom pastor Jack Killeen re-

continued on Page 5, Col. 3)

## 3 Beat Jailer, Break Out of Ozaukee Jail

Held in Greenfield Bank Holdup

Three federal prisoners being held for bank robbery escaped from the Ozaukee county jail Tuesday evening after severely beating a jailer, James Watry, 28, of Belgium who had been called to the cellblock on the pretext that the plumbing was not working. Watry was taken to St. Alphonsus hospital at Port Washington for treatment.

At large in the break were John Philip Kwitek, 27, Donald Roy Crisp, 22, and Howard L. Timm, 27, all of Milwaukee. The three were among five men charged with the robbery last July 22 of the Bank of Greenfield in which \$24,000 was taken.

The other two men charged in the robbery are Roy J. Huck, 29, and David W. Kwitek, 26, a brother of one of the escapees. Huck pleaded guilty in federal court Sept. 13 and was sentenced to 10 years on the bank robbery charge. David W. Kwitek is still being held in the Waukesha county jail awaiting trial.

### WERE TRANSFERRED

The three held in the Ozaukee county jail had been transferred from the Waukesha county jail on Nov. 26. They had been scheduled to have gone on trial Monday, but a delay was granted by Federal Judge Myron L. Gordon until April when Atty. Richard Surges told the court he needed more time to prepare for their defense.

Watry was jumped and beaten when he opened a cellblock door to investigate the complaint from the prisoners about the plumbing.

(Continued on Page 8, Col. 7)

## School Board to Meet Monday at Oak Knoll School

Electors living in the Oak Knoll Silver Maple school attendance area are urged to attend the West Bend public schools board of education meeting at the Oak Knoll school located on Hwy. 2 south of the West Bend Country club on Monday, Dec. 18, beginning at 7:30 p.m. This will be a good opportunity to meet Donald Peckenpaugh, new superintendent, and to familiarize yourself with school board procedures and business, stated William Josten, principal of Jackson, Oak Knoll and Silver Maple schools.

## Snorkels Placed

For the convenience of the mailing public - snorkel mail boxes have been placed on the triangle between Fifth ave. and S. Main st. This block is a one-way street and will permit mail to be deposited in the local and out-of-town boxes from the driver's side of the car.

Please note time of collections on the boxes.

NOT A MONUMENT but a good four-year expandable high school plan will be erected on the E. Decorah road site, Supt. of Schools Donald Peckenpaugh was telling an audience of 700 or more electors at the special district meeting Monday night in the high school gym. His presentation described a five-year

package building program (K-12) and one that is expected will cost \$10 million or more. Many citizens have already been involved in the planning. Electors also approved the hiring of architects to prepare preliminary designs at a cost up to \$50,000.

— News Staff photo

## County Board Asks Beer Tax Hike for School Funds

'Help' for Guidance Clinic Tabled

Seeking a source for additional revenue for "more schools and schools of higher quality," the Washington county board Tuesday passed a resolution urging the state legislature "to increase the tax on beer industry by the rate of \$1.00 per barrel, such revenue to be earmarked specifically for primary and secondary schools in the state of Wisconsin."

The resolution further stipulated that copies of the county measure be sent to the assemblyman and state senator of Washington county and to the chairmen of the committees on agriculture and extension education of each county board in the state.

Board members also approved a resolution authorizing the purchase of seven new squad cars for the sheriff's department with six 1967 Oldsmobiles presently operated by the department to be offered as trade-ins on the purchase of the new squad cars. The resolution stipulated that the purchase price of the cars shall not exceed \$13,000 which has been included in the budget of the traffic police for the year 1968. The sheriff's committee of the board was authorized to take steps necessary to complete the transaction.

### SOUNDS WARNING

Supervisor Guido Schroeder sounded a note of warning when a resolution appropriating \$172,249.70 from the general fund to meet the county's share of costs of construction of the new University Center.

Schroeder pointed out that costs have already exceeded in-

## Job Mobile Trailer Visiting in City at Library This Week

The Wisconsin State Employment service will have a Job Mobile trailer in West Bend on Wednesday, Thursday and Friday, Dec. 13, 14 and 15.

The purpose of the visit is to aid individuals looking for jobs and to assist employers looking for workers. The Job Mobile unit is staffed by two professional interviewers who have job openings from the local employers and from surrounding areas as well. They also have information on job training opportunities, professional and technical job openings, and Job Corps.

Employers as well as job seekers are urged to visit the Job Mobile trailer which will be located next to the Library at N. 8th and Elm sts. from 9 a.m. to 3:30 p.m. on Dec. 13, 14 and 15.

## Expect 5-Year Package Cost At \$10 Million

Additional Opinion Surveys Planned

An enthusiastic and virtually unanimous "aye" vote from about 700 electors of the West Bend school district was given to the initial steps in the district's largest school construction proposal in history Monday night at the special meeting in the high school gym. They authorized \$50,000 to hire architects to obtain preliminary plans for a "5-year-building package" that is expected will cost at least \$10 million.

"We're not going to have fancy buildings, but substantial buildings," Supt. of Schools, Donald H. Peckenpaugh declared in his stirring presentation of the district building needs. "If the bond issue referendum (set for about March 1) does not pass, many of our youngsters may get only half an education."

The proposed resolution "to start the ball rolling" was stated in Tuesday's News, along with the tentative building plans, and various charts, graphs, sketches and maps. The News also printed a two page special for the meeting. To repeat the first phase of the building program:

### FIRST PHASE REVIEWED

1. New 9-12 high school - To be completed by September, 1970. For 2,400 enrollment, but actually two high schools of 1,200 each. Two separate buildings with separate principals, athletic and debate teams and other activities, would be built within 100 yards of each other on E. Decorah rd. site, as design indicated in Tuesday's News. Many central facilities would be shared by both high school units. Later on it could be expanded to include a third high school, and later, perhaps, a fourth. The facilities to be shared would probably be built initially for about 3,600 students, Peckenpaugh said in answer to a question.

(Continued on Page 8, Col. 1)

## T. Germantown Tax Rate Drop Of \$4.69 Listed

The tax rate for the T. of Germantown will be \$23.22 per \$1,000 of assessed valuation in the township, it was announced by Melvin Kowalke, town chairman.

The rate is \$4.69 less than last year's rate due to an over-assessment for 1965 in the township, Kowalke indicated. The local town tax will be 88 cents per \$1,000 assessment with the balance of the tax going for school, county and state tax purposes.

Total valuation of all real and personal property in the township was set at \$1,466,480. Kowalke said there is approximately two and a half square miles of property left in the scattered township area with approximately 300 persons residing in the township.

## State, County Gas Co. Taxes Listed for '67

West Bend Share Tops at \$33,175

Thirty-six Wisconsin counties, 293 communities and the state will benefit from utility property tax payments totalling \$4,820,197 from the Wisconsin Gas Co. in 1967. The company made the tax payment to the state on Dec. 1.

Utility taxes are assessed directly by the state on the company's property. This system simplifies the collection of taxes on Gas company facilities which extend into a large number of Wisconsin taxing districts.

The tax money, by statute, is divided into three categories. The largest share, 63.5 per cent, is returned to the local communities where the property is located. The counties receive 19.5 per cent, and the state retains the remaining 17 per cent. The 293 communities will receive a total of \$3,060,825; the 36 counties \$939,938 and the state \$819,433.

The payment to Washington county will amount to \$32,683.79, while cities, villages and towns in the county will receive a total of \$106,431.83. The amounts to be received by these communities is divided as follows:

Cities--West Bend, \$33,175.03, and Hartford, \$9,871.01.

Villages--Germantown, \$19,095.99; Kewaskum, \$4,249.93; Slinger, \$2,307.69, and Jackson, \$1,348.28.

Towns--Hartford, \$7,348.69; Polk, \$7,215.68; Trenton, \$4,956.82; Jackson, \$4,375.90; Richfield, \$3,666.68; West Bend, \$3,134.37; Barton, \$3,054.41; Kewaskum, \$2,009.68; Germantown, \$618.23, and Addison, \$3.44.

The total Wisconsin Gas Co. tax bill in 1967 is expected to be more than \$10 million. In addition to utility taxes, the company pays many other taxes, including federal and state income taxes, real estate and personal property taxes on its non-utility property.

## Senior Citizens invited to Yuletide Party on Dec. 19

Event Scheduled at Activity Center

Senior Citizens of Washington are invited to a Christmas from 1:00 to 3:00 next y, Dec. 19, at the Activity Center in the chapel building in the county hospital and buildings on Washington West Bend. It is directly west end of the park of the courthouse. It has been for the Center because it is so light and airy few steps -- an excellent for handicrafts and lawship.

Center will be open from 10:00 to 3:00. Party plans, completion of production lunch will fill the time. The Christmas party at the Center is urged to bring with (coffee and dessert served).

### OLD BRING 'GIFT'

Attending the party bring a 50 cent gift for a tree. Women should gift for a woman; men bring a gift for a man. Refreshments will be served there will be games, and dancing.

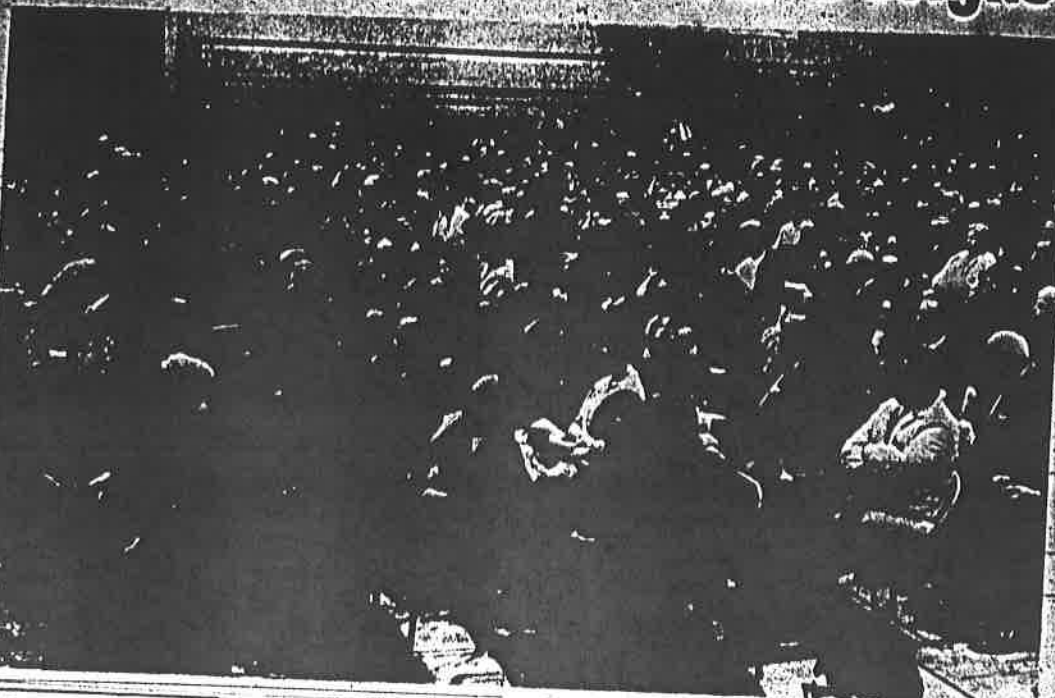
Ship has tripled since 1965. The Center's short program director, Mrs. Arlene Pleisch, is sponsoring a group of individuals and organizations.

## 68 Pictorial Albums Offered

In State Historical Society's 1968 are locally, Miss Zella resident of the Washington Historical Society, is week. Orders may be obtained from Miss Loomer at 334-3400 or at 815 S. 7th. Cost of the book type albums is \$1 each.



## Electors Okay Tentative Building Plans, Money for Initial Designs



NOT A MONUMENT but a good four-year expandable high school plan will be erected on the E. Decorah road site, Supt. of Schools Donald Peckenpaugh was telling an audience of 700 or more electors at the special district meeting Monday night in the high school gym. His presentation described a five-year

package building program (K-12) and one that is expected will cost \$10 million or more. Many citizens have already been involved in the planning. Electors also approved the hiring of architects to prepare preliminary designs at a cost up to \$50,000.

— News Staff photo

### Expect 5-Year Package Cost At \$10 Million

#### Additional Opinion Surveys Planned

An enthusiastic and virtually unanimous "aye" vote from about 700 electors of the West Bend school district was given to the initial steps in the district's largest school construction proposal, in history Monday night at the special meeting in the high school gym. They authorized \$50,000 to hire architects to obtain preliminary plans for a 5-year building package that is expected will cost at least \$10 million.

"We're not going to have fancy buildings, but substantial buildings," Supt. of Schools Donald H. Peckenpaugh declared in his stirring presentation of the district building needs. "If the bond issue referendum (set for about March 1) does not pass, many of our youngsters may get only half an education."

The proposed resolution, "to start the ball rolling," was stated in Tuesday's News, along with the tentative building plans, and various charts, graphs, sketches and maps. The News also printed a two-page special for the meeting. To repeat the first phase of the building program:

FIRST PHASE: REVIEWED

1. New 9-12 High school - To be completed by September, 1970. For 2,400 enrollment but

## County Board Asks Beer Tax Hike for School Funds

### 'Help' for Guidance Clinic Tabled

Seeking a source for additional revenue for "more schools and schools of higher quality," the Washington county board Tuesday passed a resolution urging the state legislature "to increase the tax on beer industry by the rate of \$1.00 per barrel, such revenue to be earmarked specifically for primary and secondary schools in the state of Wisconsin."

The resolution further stipulated that copies of the county measure be sent to the assemblyman and state senator of Washington county and to the chairman of the committees on agriculture and extension education of each county board in the state.

Board members also approved a resolution authorizing the purchase of seven new squad cars for the sheriff's department with six 1967 Oldsmobiles presently operated by the department to be offered as trade-ins on the purchase of the new squad cars. The resolution stipulated that the purchase price of the cars shall not exceed \$13,000 which

## State, County Gas Co. Taxes Listed for '67

### West Bend Share Tops at \$33,175

Thirty-six Wisconsin counties, 293 communities and the state will benefit from utility property tax payments totaling \$4,820,197 from the Wisconsin Gas Co. in 1967. The company made the tax payment to the state on Dec. 1. Utility taxes are assessed di-

## 3 Beat Jailer, Break Out of Ozaukee Jail

### Held in Greenfield Bank Holdup

Three federal prisoners being held for bank robbery escaped from the Ozaukee county jail Tuesday evening after severely beating a jailer, James Watry, 28, of Belgium who had been called to the cellblock on the pretext that the plumbing was not working. Watry was taken to St. Alphonsus hospital at Port Washington for treatment.

At large in the break were John Philip Kwitek, 27, Donald Roy Crisp, 22, and Howard L. Timm, 27, all of Milwaukee. The three were among five men charged with the robbery last July 22 of the Bank of Greenfield in which \$24,000 was taken.

The other two men charged in the robbery are Roy J. Luck, 29, and David W. Kwitek, 26, a brother of one of the escapees. Luck pleaded guilty in federal court Sept. 13 and was sentenced to 10 years on the bank robbery charge. David W. Kwitek is still being held in the Waukesha county jail awaiting trial.

### WERE TRANSFERRED

The three held in the Ozaukee county jail had been transferred from the Waukesha county jail on Nov. 26. They had been scheduled to have gone on trial Monday, but a delay was granted by Federal Judge Myron L. Gordon until April, when Atty. Richard Surace

## Lock Car Doors!

Police Chief George Watry of West Bend this week urged Christmas shoppers to lock their car doors. "If they are then unattended for even a short period of time," he says, "their shopping bags will be left in unlocked cars for a 'sampling' target to the 'package-lifters' who become more than usually active this time of year. The chief also suggested that packages left in a locked trunk of cars would be less likely to disappear while the owner shops."

## Thieves Force Entry In Slinger D. Burglary

### Lamps, Cash, Radio Reported Taken

Thieves broke into the Slinger office at 301 Kettle Moraine the village sometime early today, but apparently only "petty cash" and an employee's transistor radio. An investigator for the Washington county sheriff's department indicated the loss was probably under \$50 from postal cash drawers in the post

break-in was being investigated by Chief of Police Ray Slinger, Postal Inspector Haddix of the Milwaukee Post department and the sheriff's department.

Supt. Haddix and police officers said the burglars entered to gain entrance through door and side window, but unsuccessful and finally the building by forcing front door.

IL TO OPEN SAFE believed that the break-in after midnight, "possibly between 8 and 9:30 p.m."

upts. to open the post main safe, a floor type safe. But the burglars, the combination off and then postal employee's inspector and in's were unable to open immediately.

break-in was discovered when Irene Salter of an employee of the office to work at 6 a.m. and found the front door open.

r Haddix, to whom r Jack Killeen referred on Page 3, Col. 3)

## Citizens

### Invited to Yule on Dec. 19

### Scheduled at City Center

Invited to Washington citizens to a Christmas dinner, 1:00 to 3:00 next c. 19, at the Activity, chapel building in county hospital and on Washington Bend. It is directly

D E C

# West Bend News

THURSDAY

JUNE 30, 1967

TWO SECTIONS

NUMBER 50

PUBLISHED EVERY TUESDAY AND THURSDAY AT WEST BEND, WIS. 53093

Single Copy 7c

## No. Paper Tuesday Because of Holiday; Early Ad Deadline

Because of the Fourth of July holiday next Tuesday, July 4, there will be no publication of The West Bend News on that date. The Tuesday and Thursday issues for the week will be combined into one publication for Thursday, July 6.

Advertisers who wish to place ads in the Thursday, July 6, issue are requested to turn in their advertising copy before 1 p.m. on Monday, July 3.

## County Board Delays Regional Plan Adoption

### Land Donated to Sheltered Workshop

The Washington county board of supervisors Tuesday afternoon delayed by a voice vote the adoption of a regional land use and transportation plan prepared by the Southeastern Wisconsin Regional Planning Commission (SEWRPC) for use as a guide in the long range development of the seven-county southeastern Wisconsin area.

The decision to lay the matter over for further study came after Elwyn M. Romane, chairman of the board, pointed out to the supervisors that they had spent a considerable portion of the day's meeting discussing the pros and cons of the plan and suggested that further study was perhaps needed before a vote on the matter should be taken.

### STRONG SUPPORT

The resolution providing for the adoption of the plan was introduced by Supervisor Joseph Schmiltz, who is also chairman of the county's delegation to the SEWRPC. Schmiltz strongly supported the plan and urged its adoption by his fellow board members. He pointed out that five of the seven counties in the southeastern area of the state had already adopted it by unanimous votes of their county boards, with only Washington and Ozaukee counties falling behind.

Questioning the legal ramifications of what adoption of the plan could mean to Washington county residents was Atty. Clyde J. Schloemer of West Bend, who

(Continued on Page 3, Col. 3)

## No Mail July 4

Postal services will be curtailed in West Bend on Tuesday, July 4, because of the Fourth of July holiday. Postmaster Robert T. Kauth announced this week.

There will be no city or rural delivery and no window service in the post office today. The usual holiday deliveries will be made on Wednesday.

# Pittsburgh School Administrator New Superintendent of Schools

## Council Meets With Vocational School Board

### Purchase of New School Site Asked

The West Bend board of vocational, technical and adult education met with the common council at a special meeting on Monday, June 26, to request the city to purchase a site for a new vocational, technical and adult school. The site recommended by the vocational board is located just east of S. 180th ave. and immediately south of the proposed extension of Hawthorn dr. The site contains approximately 26 acres of land. The engineer's report indicates that a gravity flow sewer and water lateral could be extended to this site at a minimal cost. This site was recommended to the West Bend board of vocational, technical and adult education by a citizen's advisory committee under the chairmanship of Alan Pick. Other members of this committee were John Pick, Frank Opsahl, R. Douglas Ziegler, Gilbert Hunsack, Carl Schmeltz, Frank Salter, Frank Engelbrecht and Mrs. Margaret Nielsen. This committee reviewed a number of locations in West Bend and the surrounding area and recommended to the board that the site south and east of Hawthorn was the most desirable site available.

The vocational board further informed the council of the reorganization law which requires that all areas of the state be included in a vocational school district by July 1, 1970, and

(Continued on Page 3, Col. 6)

## Revenue Taxes Paid to City by Telephone Co.

### Check Amounts To \$25,767.89

A check for \$25,767.89 has been received by West Bend as its share of the Wisconsin Telephone company's state gross revenue tax.

The full payment of \$12,339,201.31 was made by the company last month to the Wisconsin Department of Taxation, which in turn sent the check for the local share.

C. M. Case, local manager for the telephone company, said the gross revenue tax, based on local and long distance revenues, is



DONALD H. PECKENPAUGH

## Special Bus Will Unload AFS Students Saturday

### Outline Weekend Activities in City

Some 39 American Field Service students will be arriving in West Bend this Saturday. They represent 24 countries, and have spent a year as members of families and as students of local high schools in communities throughout Wisconsin.

The teenage visitors will spend from Saturday until Monday in town before they begin their bus trip to New York. During their stay they will be the guests of host families in West Bend. Saturday evening will be a get acquainted time and on Sunday swimming and ball playing at the high school will be followed by a picnic for not only the students but the families with whom they are staying. There will be entertainment in the evening and an old-fashioned sing along.

The students on this 39, one of 76 buses, are on their way to New York for a final meeting of the

ments for the stop in West Bend is headed by Mrs. Roger Sachs. Members include: Mr. and Mrs. Stuart Eichelberg, Paul Martin, Elbert Yagow, David Jeffery. The AFS Student committee is headed by Miss Janice Jeffery.

The American Field Service is a privately sponsored, non-profit, non-sectarian organization for the promotion of understanding among people. It pursues this objective through an International Scholarship program whereby carefully selected U. S. and overseas students, 16 to 18 years of age, are given a deeply personal and educational involvement in the community life of another country through placement in selected homes and schools for a school year or a summer.

Approximately 4,300 AFS scholarships are awarded annually. Since the inception of the program in 1947, more than 25,000 students from 76 countries have come to the United States for a school year and over 13,000

## Peckenpaugh To Begin Duties In City Aug. 10

### Board Pleased with Final Selection

The board of education of the West Bend public schools Wednesday announced the name of the new superintendent of schools. He is Donald H. Peckenpaugh, currently administrative assistant for the Pittsburgh, Pa. public schools. Peckenpaugh will be granted the doctor of philosophy degree from the University of Chicago this year, and has 17 years of professional experience.

Prior to his service in Pittsburgh, he was an educational consultant for the Center of Urban Studies and a National Institute for Mental Health fellow in Educational administration in the department of education at the University of Chicago.

### BROAD BACKGROUND

Peckenpaugh, who has been a school psychologist, elementary principal, secondary principal and a central office administrator, previously was employed by the Gary, Ind., and the Munster, Ind., public schools. During the Korean conflict, he was a personnel psychologist in the U. S. Army. In the past, he has served as a consultant for numerous school systems and taught at Indiana University and the University of Pittsburgh.

Mrs. Margaret Nielsen, director of the Board of Joint School

(Continued on Page 3, Col. 7)

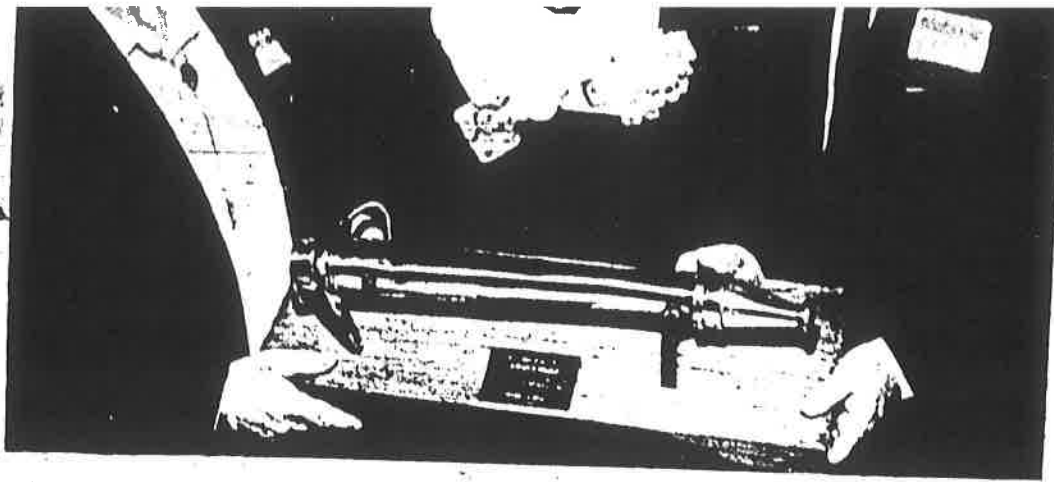
## VFW To Hold July 4 Picnic, Kiddie Parade

### Fireworks to Again Climax Event

Plans are progressing for the annual picnic and Kiddie Parade to be sponsored by the local Ford A. Schaefer Post 1393 of the Veterans of Foreign Wars in West Bend on Tuesday, July 4. The parade, which will be organized at the VFW clubhouse on the corner of Sixth and Walnut sts., is scheduled to begin at 9:30 a.m. and proceed to Regner Park where the picnic will take place.

### GIFTS FOR CHILDREN

All children participating in the parade will receive flags and tee awards. Special prizes will be awarded for the best decorated doll buggy, bicycle, television



**RICHFIELD AREA** residents last week paid tribute to their veteran fire chief, Herman Wolf, when he was honored for 37 years of service as chief and 47 years as a member of the department. Firemen's Park at Richfield was named in his honor and he received numerous gifts in appreciation for his long service.

In the top photo guests are shown at the banquet at the fire hall which preceded an open house program which was attended by approximately 500 persons.

Mr. and Mrs. Wolf are shown in the center photo holding a

jewelry case and silver cigar humidor presented to them while Ed Kraetsch, oldest living fireman of the department and first engineer poses with them.

Below the chief and his wife look over the department's first fire nozzle, which was gold plated and presented to Wolf as a memento. The nozzle was presented by Edward Stuesser, the master of ceremonies for the occasion.

Mr. and Mrs. Wolf have 13 children, six boys and seven girls and 39 grandchildren. Mrs. Wolf still operates a phone answerer and dispatcher.

The veteran chief has been a member of St. Boniface Catholic choir for 25 years and was a member of the old Richfield fire department band where he played a cornet.

The testimonial banquet and open house program was sponsored by the Richfield Lions Club and fellow firemen.

Congratulatory messages for the veteran chief were received from Senators Nelson and Proxmire and Governor Knowles as well as other dignitaries.

## Electors

(Continued from Page 1)

Company and Enger Kress local unions previously endorsed the plan. Another recent labor endorsement for the proposal is that of:

- Sub-Council No. 3 of the Allied Industrial Workers, comprising 12 industrial unions in the county.

To sum up other endorsements:

1. Industry - Some 13 major industries in the school district, employing over 4,000 persons, including: Barton Products Corporation, Enger-Kress Co., Gehl Bros. Mfg. Co., Line Material Industries, Mallard Coach Corp., Serigraph Sales & Mfg. Co., Stolper Industries, Inc., Wesbar Stamping Corp., The West Bend Company, West Bend Equipment Corp., Wisconsin Electric Power Co., Wisconsin Gas Co., B. C. Ziegler and Co.

2. West Bend Education association - At a recent meeting, this group voted "overwhelmingly" to endorse a yes vote.

### NEED UNQUESTIONED

The board appointed and met with a citizen's advisory committee composed of about 30

persons, representing both views of the first referendum vote, a majority of whom opposed it for one reason or another. The committee unanimously agreed that the need for a new building was unquestioned. At the same time, this group said it shared with all taxpayers a concern over increasing taxes. (A few of these members have written letters to the editor).

Financing was summarized by the board as follows - Based on the present equalized value of the district of \$146,557,880, the first year's tax levy will amount to \$1.84 per thousand of equalized value. The annual mill levy over the 20 year period will decrease if the equalized valuation continues to rise as

it has in the past. There has been a \$33,042,000 increase in equalized valuation during the past three years and further increases have been projected.

After carefully weighing the facts and figures previously presented, and comparing opinions of those close to the subject who either favor or oppose the referendum proposal, electors will cast their ballots Tuesday, May 23, between 7 a.m. and 8 p.m.

Absentee ballots can be picked up at the superintendent's office or at the home of Clifford Holmes, Jackson, district clerk. It is not necessary to be registered or to be a property owner to vote.

German club on behalf of all the German clubs of past years.

Pictured, from left: Kathy Grundahl, club secretary; Miss Podruch; Dr. Edlhauser; Jean Bast, treasurer; Bill Hildebrand, president, and Carol Zarling, vice-president.

—David Schleif photo.

## Surplus Commodity Food Distribution Announced for May

The surplus commodity distribution schedule for the month of May has been announced and will be as follows:

Persons whose last names begin with the letters A through J, Monday, May 22; K through R, Tuesday, May 23, and S through Z, Wednesday, May 24.

The time is from 1 - 4:30 p. m. in the basement of the courthouse annex, 320 S. Fifth ave., West Bend.

Recertification is held on the Tuesday of the second full week of every month in the basement of the courthouse annex from 1 - 5 p. m.

## Know THE Weather

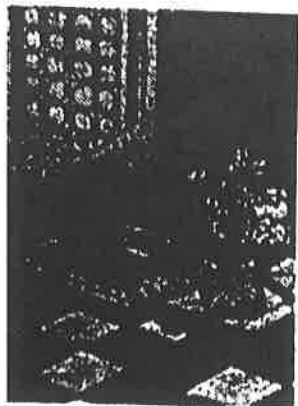
Is it true that people feel better when the wind is out of the northwest?

Yes, as a general rule -- which has its exceptions--this weather folklore is correct. Benjamin Franklin even detected the good effects of a northwest wind and wrote that the best time to do business with a man was when the wind was out of the northwest.

This is true because usually, our high-pressure clear weather systems come from the northwest. This high pressure gives one a feeling of mild exhilaration and a cheerful mood is more likely to be encountered by a salesman during such weather than when the barometer is low.

So, in a general sense, a northwest wind is a sign of cheerfulness and "business" weather.

## HAT I'T LEAVE U COLD



## Schmidt OR COVERING

ne You Have Trusted For Over 30 Years" AR ST. WEST BEND 334-2301

Parking at the Door FREE ESTIMATES ERT INSTALLATION

## Fun in the Sun SALE KITCHEN SETS

New Styles

BUD WALTER furniture

134 N. Main St. WEST BEND

THE DOWNTOWN FURNITURE STORE

After 120 taste, J&S fashions, peccable that mak. continues that assu. Make, you ward-lash look best priced to





Blend board of vocational and adult education with a number of problems. First, they the problem of vocational present facility by 1968. This, in turn, educational problems. Not facilities be need must be available by 18, if the programs of going to be carried y.

ally agreed that vocational education is part of the present educational picture. Management are asking and courses to the vocational level the present labor train new workers competent work- y enter the labor

JOIN AREA  
The school board school are working the city council tion county board. By state statute, ty must become a according to the tional School Dis- composed of, be- county, the coun- Lake, Dodge and The vocational- at Fond du Lac ted by the state to ea school. They the present time r vocational and s, and an asso- gram.  
and Beaver Dam eal schools will schools, and of- oriented pro- two year dura- gh school level.

OFFERED  
will be offered trade and in- nomies, busi-

## n Zoning inds oring

corrections in areas on the up were sug- hearing on inance for the nantown last public heard ordinance, persons at-

ding commis- map and any before it is lage board in Village Clerk l.  
ing ordinance d the village r the orderly ment of the d ordinance epted by the g.

These fields have been selected on the basis of need established by the State Board from information taken from surveys, interviews and studies conducted in West Bend over a period of several years. Subsequently, these sources were summarized by the administrative staff of the state board of vocational, technical and adult education. A statement of their findings, together with the state's recommendations for programs at Beaver Dam and Fond du Lac will appear in an early issue of the West Bend News.

## County Group To Attend State Road Session

### Safety to Highlight Rhinelander Meet

A pilot highway safety program now being developed by Wisconsin state and local governmental agencies in cooperation with the National Safety Council will be spotlighted at the annual Summer Highway Conference, June 14-16, at Rhinelander.

Program developments and action needed for an effective statewide effort will be discussed by a panel moderated by Nick Gustovich, Rusk county highway commissioner and state co-chairman for county highway safety studies.

Panel speakers will be Arvid A. Sather, safety coordinator, executive office, Robert Sorenson, Chicago, National Safety Council; Dan F. Schmitz, director of safety, Motor Vehicle Department, W. N. Volk, chief traffic engineer, State Highway Commission, and R. H. Paddock, division engineer, U. S. Bureau of Public Roads.

EXPECT OVER 500  
Advance registrations indicate that more than 500 delegates and guests will attend the three-day session. Planning to attend from Washington county are Al Rietler,

## Oldsters Invited to Fellowship Day at Cedar Lake Home

The monthly Fellowship Day will be held in the therapy wing of the Cedar Lake Home from 2 to 4 p.m. on Thursday, June 15.

Residents of the home invite all oldsters in the community to spend the afternoon with them and to enjoy an interesting program, to visit with new and old friends and to share the tasty refreshments prepared for the guests.

residents six years of age or over for 50 cents. Swim passes for residents from six to 18 years of age are available for \$2 for residents of school district No. 1 outside of the city.

## School Board Members Elect New Officers

### Schneiss, Kenny Added Temporarily

The resignation of two board members last week presented an immediate problem as to board officers for West Bend school district No. 1. At a special meeting of the board held on Wednesday, May 24, the day after the resignations were accepted, Mrs. Margaret Nielsen was elected director, and M. J. Goring, Jr., was elected treasurer. The office of clerk was not affected by the resignations and Clifford Holmes still holds this position.

The three remaining members of the board have also reached the following conclusions:

#### TO DRAW ON EXPERIENCE

1. Any action on the high school building program should be deferred until after the July meeting when at least two new board members will be elected.

2. The matters which require immediate attention are preparing the budget and continuing the search for a new superintendent. Although the board could function legally with three members until July election, the importance of these matters dictates immediate selection of two additional board members, thereby reinstating membership at five without further delay.

3. Selection of board members to fill vacancies may be made by the remaining members of the board. Persons so selected will serve until new board members are elected in July.

4. Appointees with recent experience as board members will be able to provide the most assistance at this time.

#### "NO" CANDIDATES

Based on these general conclusions, the board at a special meeting held on May 31, appointed Carl Schneiss and Thomas J. Kenny, as members to fill the vacancies caused by the recent resignations. Each has had experience on the board in recent years, and is familiar with district financial and budgetary matters.

Both Mr. Schneiss and Mr. Kenny are interested in school affairs and we appreciate their willingness to serve on an interim basis. Neither of these men will be candidates for school board membership in July.



MAJOR SCHOLARSHIP and award winners were named at West Bend high school Thursday in the dramatic second day of the annual awards program. The recipients, each of who received from one to four major awards, were from left:

Sandy Heiges, Ron Nimmer, Kathy Steiner, Bill Hildebrand, Barbara Cam, Maureen Santini, Barbara Behlen. The three seated received the Ziegler scholarships.  
Second row - Kay Baker, Ellen Shaw, Diane Noegel, Jean Melennie, Judy Rubel, Therese

## Senior Banquet Is Tonight at Cabrini

The West Bend high school senior banquet will be held at St. Frances Cabrini school gym tonight (Tuesday), June 6, at 6:30, not at St. John's school as erroneously stated in the News last Thursday. Commencement exercises will be held this Thursday, June 8, at 8 p.m. in the high school gymnasium for approximately 345 seniors.

## Firemen Called for Grass Fire in Area

Firemen from the No. 1 station on Seventh and Washington sts. were called out at 7:56 p.m. last Wednesday when sparks from a passing train apparently set fire to grass along the North Western railroad right of way near Hwy. 143 and G.

## Home Blaze, G Keep Local Fire

### Loss at Residence Set at \$7,000

Firemen had a busy time of it over the weekend when they were called to a serious house fire early Sunday and two grass fires later in the day.

The initial alarm was sounded at 4:29 a.m. when passers-by noticed smoke coming from the residence of Mrs. Frieda Wehnert at 649 S. Indiana ave.

The fire was reported by Miss Hasenfus, who resides nearby.

## Keep Fire Phone Lines 'Open!'

Fire Chief Carl Peters Monday issued a warning to area residents not to call the fire station when the fire siren sounds to learn the location of fires.

MAY

# West Bend News

THURSDAY

MAY 25, 1967

TWO SECTIONS

BY TUESDAY AND THURSDAY AT WEST BEND, WIS. 53095

Single Copy 7c

NUMBER 41

## Referendum, 2,470 to 1,405

### or Tuesday of Holiday; Deadline

of the Memorial  
next Tuesday, May  
will be no publi-  
West Bend News  
The Tuesday and  
issues for the week  
lined into one pub-  
Thursday, June 1.  
rs who wish to  
in the Thursday,  
are requested  
their advertising  
1 p.m. on Monday.

### Jubilee weekend Boltonville

### tion Slated y, Sunday

Jubilee of the or-  
Boltonville vol-  
untarism will be ob-  
skend at the annual  
versary celebra-  
tion on Saturday  
May 27 and 28.  
th the opening of  
tractions at 1:30  
day; the two day  
continue through  
and Sunday and  
d with a mammoth  
lay Sunday night.

### ICE RIDES

at midday rides  
Saturday after-  
noon exhibition  
p. m. by the Wis-  
consin Parachute Club  
falls. The jubilee  
admission, will be  
p. m. Saturday  
parade is slated  
the jubilee dance,  
led by the Cru-  
son will get under  
continue to 12:30

gram highlights  
steak dinner from  
p. m. and from  
ryone is served.  
ize parade is  
with water fights  
0 p. m.

### TRACTIONS

u will be plenty  
food and re-  
nos and other

oltonville resi-  
dential invitation  
dents to attend  
and festivities.

### y Sale day



EARLY DISCOVERY of a fire at the Badger Paint Store at 465 N. Main St. Tuesday night and

window, apparently due to a short in wiring leading to an outside wire. Fireman

Fire Loss at

### Horlamus and Ziegler Resign From Board

### Numerous Factors Again Spell Defeat

West Bend school district elec-  
tors for the second time within  
a half year Tuesday, defeated a  
\$3,250,000 referendum to build a  
new high school on Decorah road,  
2,470 to 1,405. Rejection of the  
proposal was followed by the  
resignation of two of the five  
school board members, R. Doug-  
las Ziegler and John P. Horla-  
mus.

In December, district voters  
downed a \$4,295,000 bond issue  
referendum, 2,184 to 912. As  
predicted, Tuesday's referendum  
attracted a considerably larger  
total vote and it was also closer.  
The "yes" vote in December  
represented 29 per cent of the  
total. At Tuesday's election, it  
represented 36 per cent.

### VOTE BREAKDOWN

A breakdown of the vote fol-  
lows:

At City Hall (Wards 1, 2 and 6) -  
362 yes; 734 no votes.

At High School (Wards 3, 4 and  
5 and towns of West Bend and  
Trenton) - 822 yes; 1183 no  
votes.

At Barton village hall (Ward 7  
and towns of Addison and Bar-  
ton) - 93 yes; 422 no votes.

At Jackson village hall (towns  
of Jackson and Polk and village of  
Jackson) - 428 yes; 132 no votes.

Horlamus and Ziegler tendered  
their resignations at a brief  
meeting in the superintendent's  
office, following the election.

### RESIGNATION STATEMENTS

Horlamus' terse resignation  
statement read:

"I wish to present my resigna-  
tion from school board member-  
ship at this time and effective  
immediately."

Ziegler's statement:  
"I would like to announce my  
resignation from the school board  
effective immediately.  
"During the past four years, I  
have subordinated my family and  
job responsibilities to that of  
serving the board of education in  
our community. I now intend to  
spend more time with my family  
and direct additional energies to  
my job.

"I have no apologies to make  
for leaving the board at this time.  
I have done the best I can to serve  
this district and shall always  
cherish the wonderful association  
that I have had with you and my  
fellow board members during  
this period of time."

Both statements were address-  
ed to and read by C. E. Holmes,  
clerk. Michael J. Gouling, Jr.,  
finally stated, "We have no other  
recourse but to accept the resig-

M  
A  
Y



# West Bend News

TUESDAY

MAY 23, 1967

TWO SECTIONS

PUBLISHED EVERY TUESDAY AND THURSDAY AT WEST BEND, WIS. 53091

Single Copy 7c

NUMBER 40

## News vars sion

ews received  
nual Wisconsin  
ts' for 1967  
ganization's  
t Milwaukee

d honorable  
the general  
or unlimited  
in the "spo-

o in the Best  
otion last  
erefore in  
n this divi-  
wards were  
ual conven-  
noon at the  
Milwaukee.

## Girl trict wn

, of Col-  
osh State  
is chosen  
In Dairy-  
district 5  
The fifth  
d entries  
ic, Ozau-  
ashington

said the  
h the vil-  
lits and  
s held in  
additional  
d Alice  
selection  
shington  
ive girls  
y area.

ES  
Included  
t Bend;  
artford;  
r; Fran-  
id Miss

oute of  
few the  
sts. and

A entry  
ade and  
r youth

RS  
parade,  
nd the  
o Ko-  
d 4-11;  
Kirch-  
t Bend  
l; Bar-  
side

ice in  
a suc-  
signing  
Marko-  
on Hay

# Expect Heavy Turnout Today for New High School Bond Referendum

## Board Seeking \$3,950,000 for Building 'Need'

### Electors Ponder Effect of Delay

Intense interest has been aroused in the West Bend school district referendum today (Tuesday), on the question of whether or not to authorize bonds in the amount of \$3,950,000 for expanded high school facilities.

When district voters defeated a \$4,295,000 referendum for the same building in early December, the margin was 2,184 to 912. Not only is the total vote expected to be considerably larger today, but a substantially closer vote is generally anticipated.

The need and urgency for the new 1,500-student building on Ducah road are unquestioned by the vast majority of electors. A wide variety of reasons and rationalizations have been presented in stirring campaigns, and in conversations up and down the streets, for both "yes" or "no" votes.

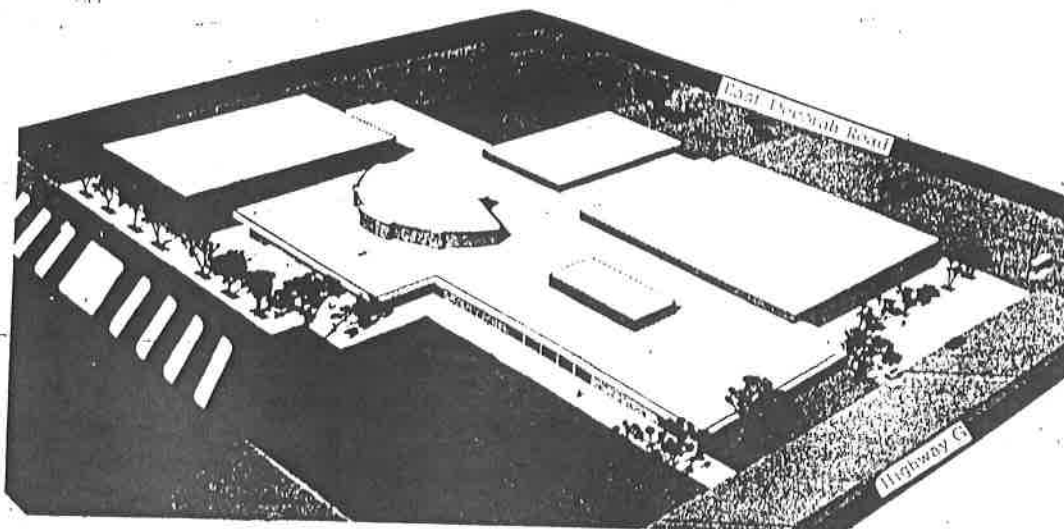
### YES AND NO QUOTES

If the cost is reasonable or not continues to be debated, but not to the extent it was earlier. Both "sides" claim a certain degree of deception by the other in their "campaigns." The Youth, Education & School Committee, Inc., says delay will mean "curtailment of educational opportunity for our young people" and "higher costs later." Although many labor units have endorsed a yes vote, the Washington County Central Labor Council recommends a no, asking that "we re-evaluate and re-study our aims and objectives in realistic terms."

The first year's tax levy will be \$1.84 per \$1,000 of equalized value, if the project is approved. Polling places are as follows:

### WHERE TO VOTE

City of West Bend (Wards 1-2-6) - City Hall.  
City of West Bend (Wards 3-4-5) - High School.  
City of West Bend (Ward 7) - Barton Village Hall.  
Village of Jackson - Jackson Village Hall.  
Towns of:  
Addison - Barton Village Hall.  
Barton - Barton Village Hall.  
West Bend - Barton Village Hall.  
Trenton - High School.  
Jackson - Jackson Village Hall.  
Polk - Jackson Village Hall.  
HOURS - 7 a.m. - 8 p.m.



ELECTORS of the West Bend school district will be voting today (Tuesday) on a referendum question asking for a \$3,950,000 bond issue for this new high school building, with equipment and some landscaping included.

The building, designed by the Flad architectural firm of Madison, largest in the state in school construction, contains 24 academic classrooms, five science labs and three study rooms for the academic curriculum, 17 shops and classrooms

and one study room for vocational courses, a combined library and study area, a 600 seat auditorium which would serve as a multi-purpose educational and activity area; two arts and crafts classrooms; two music classrooms; a gymnasium; a

cafeteria, kitchen and youth area; a principal's office and guidance office, a clinic and faculty rooms.

The facilities would accommodate 1,350 high school students in September of 1968 and 1,500 eventually.

## Kewaskum to Honor Principal At High School

To Note Mitchell's  
25 Year Service



C. ERNEST MITCHELL

Alumnus, former and present teachers and friends of C. Ernest Mitchell will gather on Sunday, May 28, to pay tribute to him in recognition of his 25 years of service to Kewaskum

## Summer School Classes to Begin in District June 26

Complete Forms  
By Late This Week

Summer School programs recently were sent home with public and parochial school children throughout the West Bend school district.

The West Bend public school 1967 summer session will continue to include credit courses. This would mean that our school district will offer programs in the following areas this year:

Basic or remedial classes - for students in grades three through eight inclusive.

Enrichment courses - for students in grades one through eight.

Credit courses - for students in grades nine through twelve.

The classes in basic or remedial work and the enrichment classes have been very favorably received during the past years. It is obvious that these programs have met a need of students in our area. It is our hope that by the addition of credit courses to our summer school program we will be able to fulfill still another need.

The credit courses will be available for pupils in grades nine through twelve. The program will be aimed at speedily adding those students who did not satisfactorily complete the requirements of the course during the regular term. The additional work during the summer session (87 hours) will, in most cases, enable the student to complete the course requirement and receive credit for the year's work.

### CREDIT COURSES

Credit courses will also be made available to students who desire to do additional work in courses that they cannot fit into their schedule during the regular term. These courses will be geared to the semester work of the regular term.

Students who successfully complete the summer course will earn half a credit. Students will be programmed individually into this program. It is hoped that schedules can be worked out enabling students to complete the entire course during two summer sessions, or during one semester of the regular term and one summer session.

All credits granted during the

## Vandals Busy In City Over Past Weekend

### School and Park Buildings Entered

Vandals spent a busy weekend in operations throughout the city over the past weekend, causing considerable damage at the Barton graded school, Regner city park and on numerous automobiles owned by area individuals.

The most serious damage was probably caused at the Barton school. According to the West Bend police department, illegal entry was made in the school late Saturday night or during the day Sunday, and was discovered at about 6:24 p.m. on Sunday. Damage was discovered in three of the school's class rooms and in both the upper and lower hallways.

### PAINT POURED

Police investigating the illegal entry found papers strewn about the floor in one room, with all containers dumped on the floor and yellow paint poured over the

## Referendum Slated May 23

### Church Day Care Center Plans Proceed

#### Assemblies of God To Erect Facility

The local Assemblies of God church has, for some months, been actively engaged in plans for a Day Care Center in the city. After much study and consideration of this program, Pastor Lowe met with Mrs. Mae Lorber, regional supervisor of Day Care Centers, State of Wisconsin, on Oct. 12, 1966, to discuss state requirements.

A tentative policy statement was prepared and presented at a meeting on Nov. 19 with the group who had previously entertained the idea of a Day Care Center in West Bend. This group included: Mrs. Alfred Polzin, president; Mrs. Merlin Risse, of the Washington County Guidance Clinic, secretary, William Josten, elementary principal of Jackson elementary school, advisor, Mrs. James Clift, and Atty. Leo Schlafer, legal advisor. Mr. Josten later discussed this after a P. T. A. meeting in March with some interested persons.

#### PROPERTY PURCHASED

In December 1966, property was purchased on E. Decorah rd., directly adjacent to the proposed high school site, on which to build both the educational unit housing the Day Care Center and, at a later date, the new sanctuary for the church. Initial meetings have been held with an architect and a contractor to determine the estimated cost of building this first unit according to State Welfare and Wisconsin Industrial commission requirements.

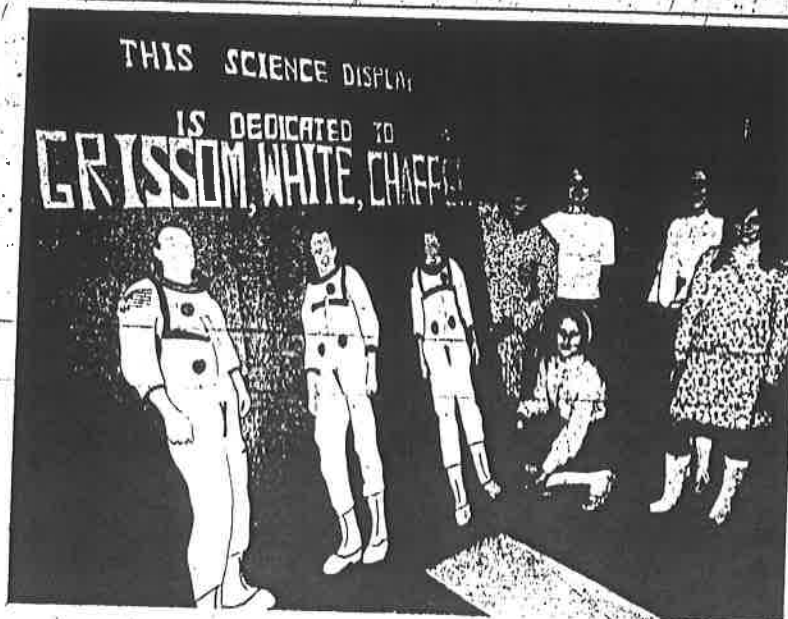
Within the past month, Pastor Lowe has spoken to personnel managers at Amity Leather Products, The West Bend Company and Enger-Kress relative to these plans.

Tentatively the church plans to erect a structure 40' x 90' with first and second floors. State requirements as to area space, lighting, toilet and kitchen.

### Weekend Lawn, Garden Clinic at Jim Handy Store

#### Safety, Beauty Aim Of Two Day Event

The second annual Jim Handy Lawn and Garden Clinic will be held this Saturday and Sunday, Apr. 29 and 30. The clinic will feature a complete selection of lawn and garden merchandise from grass seed to power mowers. The emphasis will be on beautification and safety with



A SCIENCE DISPLAY set up by sixth graders of Holy Angels school just about filled the Walnut room of the school last Monday, Tuesday and Wednesday. Dedicated to the late Astronauts Grissom, White and Chaffee, the display included a number of space exhibits. Positioning the large dedication board at the entrance were: Michele Flasch (kneeling) and

standing, from left: Kathy Weiss, Ann Stoffel, Susie Schell and Marilyn DuCharme. This display board was done by Debbie, Guehey, Susie Monroe and Miss Weiss, under the direction of Sister M. Rose Celine, sixth grade science teacher. Holy Angels band and forensic students also gave performances last week in front of parents and friends.

—News Staff

### To Stage South Pacific Show Here on May 5, 6

"South Pacific" will be the annual operetta presented by the West Bend high school music department. The show will be given in the McLane school gymnasium at 8 p. m. on May 5 and 6.

Hoody Mary, a Tonkinese woman who is profiting from the war by selling souvenirs, is both amusing and mysteriously moving. The show is graced by many famous songs, among them "I

### Bond Issue Cut By \$345,000 Via Changes

#### Advisory Group Thanked by Board

The board of education of West Bend Joint School District No. 1 announced late Tuesday that it had accepted the recommendation of the Citizens Advisory committee, made changes in the plans for the proposed high school, reduced the amount of the bond issue to \$3,950,000, and scheduled a referendum for Tuesday, May 23. The announcement was made at a press conference called by the board and attended by press and radio representatives.

#### CHANGES MADE TO PASS REFERENDUM

In response to questions, the board stated that it had made changes in the plans and reduced the amount of the bond issue to insure a successful referendum vote. The board stated that it had worked closely over the past four months with the Citizens Advisory committee in attempting to comply with the wishes of the electorate.

The board expressed its appreciation to the members of the Citizens' Advisory group for their contribution to the high school building program and thanked them for their support. A spokesman for the board said: "As you know, when we appointed the advisory committee, we consciously included many people whom we knew had objections to one aspect of the program or another, and it is most gratifying that a majority of this group now support the overall proposal at a cost of \$3,950,000."

#### AGREE ON NEED

Board members pointed out that there was general agreement in the district that these new high school facilities are required and referred to the fact that the Citizens Advisory committee was unanimous in its feeling that the need for new high school facilities was beyond debate.

The board emphasized that approval was required at this time to minimize disruption of the educational opportunities for high school students in the district.

#### PLAN BUILDING CHANGES

The \$345,000 cut-back from the December referendum amount of \$4,295,000 appears to be the maximum amount that can be eliminated and still permit the basic essentials for a 1500-student high school facility.

Major items that will either be deleted, materially altered or modified in order to accomplish this are as follows: heat pump, air conditioning, visitor and student parking lots, elevator, bleachers, tennis courts, classroom dividers, carpeting, and equipment.

### Loyalty Day Programs Set In City Monday

#### Programs Planned At Most Schools

Loyalty Day programs will again be held in schools in the West Bend area on Monday, May 1, under the sponsorship of the local Fred A. Schaefer Post 1393 of the Veterans of Foreign Wars. The local observance is held in conjunction with a nation-wide program sponsored by the VFW to combat the once prevalent



# Vest Bend News

THURSDAY

MARCH 23, 1967

TWO SECTIONS

SHEDED EVERY TUESDAY AND THURSDAY AT WEST BEND, WIS. 53095

Single Copy 7c

NUMBER 23

## School Board Will Seek Elector Approval to Double Size of Fair Park School in City

Set April 17  
Meeting Date  
With Electors

Addition Is Not to  
Exceed \$275,000

The abnormal increase in enrollment of K-6 (kindergarten through sixth grade) students in the West Bend school district, expected to climb by 208 pupils from Sept. 1, 1966, to Sept. 1, 1967, resulted in a recommendation by the school board Monday night that could lead to doubling the size of Fair Park elementary school. It would be completed "as early in the next school year as possible."

After again reviewing various alternatives during their five-hour session, the board unanimously passed a motion, worded approximately as follows: To authorize an architect to proceed with developing plans for an addition (eight classrooms and related facilities) to Fair Park school, not to exceed \$275,000 (including fees, site development and equipment) and to present this recommendation at a special electorate meeting at 7:30 p.m., April 17 at Metane school gym, with the project to be financed with a 10 year term loan.

### ROOMS PROVIDED

The proposed addition, which would provide about 15,000 square feet of floor space, would include seven regular classrooms, a large kindergarten room, library, extension of the multi-purpose room to double its size and new boiler and boiler area facilities (in a small basement area).

A preliminary sketch of the addition, drawn up this past week, was presented by Tom Flad, of John J. Flad and associates, of Madison, and it was emphasized that the new wing "follows the original plan" for future expansion of the facility. With the help of Flad, the estimated cost figure was determined, and this would include at least doubling.

(Continued on Page 3, Col. 1)

Grant Received  
For Local UAW

WEST BEND  
FUTURE FARMERS  
OF AMERICA

LEARNING TO DO  
GOING TO LEARN  
EARNING TO LIVE  
LIVING TO SERVE  
PROTECT OUR HERITAGE  
FUTURE FARMERS OF AMERICA  
WEST BEND CHAPTER

FFA AWARD WINNERS were honored at the annual dinner meeting of the West Bend chapter Thursday evening in the high school gym, attended by approximately 130 persons. The top winners, standing in front of the star at left, are from left: Bill Hartwig, Star Agriculturist; John Wilkens, Chapter Star Farmer and recipient of the crop farming award; and Mark Gundrum, Star Greenhand.

Other award recipients were, from left: Wallace Hennig, out-

standing FFA member; Richard Peeher, dairy farming award; Orlin Wendt, beef farming; Gary Bätzler, swine farming; Dwight Roell, mechanics; Tommy Schubert, forestry; Richard Ciriacks, livestock farming; Ken Solberg, ornamental horticulture; and Gerald Rogge, home improvement.

Ray Vander Zanden, FFA advisor and instructor, is shown at the rostrum as he announced the recipients of the well-earned awards. —News Staff

FFA Chapter  
Honors Stauske,  
Boehlke, Homuth  
Receive Honorary  
Degrees, Plaques

Nearly 150 members, parents and guests attended the annual parent and son banquet of the West Bend chapter of the Future Farmers of America Thursday night. Receiving honorary degrees and plaques for service and aid to the FFA were:

Fred Stauske, Honorary Chapter Farmer degree; Ernst Boehlke, Distinguished Service award for an individual, and Don

Area Residents Urged to  
Register for Blood Drive

Three-Day Event

without charge. This liberal





May 4, 1967

# The West Bend News



active member  
**WISCONSIN PRESS ASSOCIATION**  
1967



NATIONAL NEWSPAPER ASSOCIATION  
SUSTAINING MEMBER

Entered as Second Class matter January 3, 1903, at the Postoffice, West Bend, Wisconsin, under the act of Congress of March 3, 1879.

MRS. JOS. J. HUBER  
MARK W. HUBER  
WILLIAM J. STEINER  
PAUL L. MUELLER  
LEIF ERIKSEN  
FREDERICK WEISS  
ROBERT Z. BECKER

EDITOR AND PUBLISHER  
Business Manager  
Managing Editor  
Associate Editor  
Sports Editor  
Advertising Manager  
Assistant Advertising Manager

Published on Tuesday and Thursday at 102 S. Sixth Avenue,  
West Bend, Wisconsin 53095, by  
**WEST BEND NEWSPAPERS, INC.**

## SUBSCRIPTION PRICES

In Washington, Ozaukee, Sheboygan, Fond du Lac, Dodge, and Waukesha Counties:			
One Year	\$5.00	Six Months	\$2.75
		Three Months	\$1.50
Elsewhere in Wisconsin:			
One Year	\$6.00	Six Months	\$3.25
		Three Months	\$1.75
Outside Wisconsin:			
One Year	\$8.00	Six Months	\$4.25
		Three Months	\$2.25
Military Service Personnel, Anywhere		\$10.00 Per Year	
Single Copy		7c	By Mail 10c

Thursday, May 4, 1967



## STATE CAPITOL LET

By WISCONSIN PRESS ASSOCIATION

### Need Is Evident — Support New High School Project

It's been said that nearly everyone in most any community becomes an expert where school building programs are involved. The only trouble is, there comes a time for "yielding a little," as a solution is sought for meeting urgent and widely recognized needs for new school facilities. Such a time arrived in the West Bend school district in December, after the \$4,295,000 bond issue referendum was defeated.

There's been enough "yielding" since that time, and even more important, development of a better understanding of the project involved, to warrant a "yes" vote on the \$3,950,000 bond issue referendum for a new high school building on the Decorah road (East campus) site. The date is May 22.

Unlike Johnny Carson who asked for "more dough" when he recently "returned" to NBC, the board, supported by a majority of the citizen's advisory committee, is now asking for \$3,950,000 less, to serve our children. The reduction was made possible via deletions, alterations or modifications—including elimination of the controversial heat pump.

Countless hours of study have been devoted by administrators, school board members, teachers, competent architects and later a large citizen's advisory committee to develop and review plans for the proposed school building. They have all "yielded a little" in planning the 1,500-student facility.

Actually, some of the ground work or preliminary planning goes back a few years.

Changes always meet resistance and perhaps one of the reasons why the referendum was trounced in December, other than cost, was opposition to so-called revisions in philosophy to be incorporated in the new building. This was partly due to a lack of understanding of some of the terminology used — such as quiet centers. . . . More familiar terms are now being used in explaining the building.

"You will never get everyone to agree on a common philosophy," William C. Kahl, state superintendent of schools, said at a meeting of the citizens' advisory committee here in January, steering his talk toward stressing such important factors in education today as change (increasing in education at a rapid rate), flexibility, creativity and adaptability.

"Change is part of educational philosophy and we must recognize and learn to accept this and adapt our own thinking," Kahl stressed.

And actually, the philosophy changes being incorporated in the new high school facility are not so different from those currently being practiced in the present high school, you can learn by visiting this modern school. At the same time, he thankful we don't have a school board that "lags behind the times."

More and more communities have had trouble passing new school building referendums in recent years. At Homestead (Mequon-Thiensville), for instance, when its November referendum for a new high school project was defeated, some voters complained that it did not leave enough choice. Then in the December referendum, when the school board split it up into seven questions, many voters complained that the proposals were too confusing. The referendum was defeated again.

The same "lack of choice" complaint has been voiced here, from time to time. Yet if the district tried to incorporate the building ideas of a wide variety of laymen, we would end up with a hodge-podge.

It seems to us that as long as the board members (elected by us), the administration, the majority of the teachers and a majority of the citizens' advisory committee members now support the \$3,950,000 proposal, even after the plan weathered one defeat, we should likewise support it.

### VOTE AT 19?

During the history of the country most jurisdictions have had a rule that a person attains his majority, including eligibility to vote, at the age of 21 years. That 21 year rule is also the most common around the world. But in recent years there has been increasing pressure for the relaxation of the voting age qualification in the several states. In the last half dozen Wisconsin legislatures, the issue has popped up with varying degrees of enthusiasm. A few states have lowered their legal voting age.

The question is now before the Wisconsin legislature again, and on the first roll call in the state assembly last week, it appeared possible that the state may amend its traditional 21 year requirement. Defeated regularly on an 18 year voting age proposition, the backers of the idea that more young people should take part in their government this year brought in a 19 year old voting bill. Somewhat to their own surprise, they won a two to one majority in favor of it on the first significant test.

Such early votes are not always reliable signs of a legislature's intentions. Even if the assembly approves the bill of youthful Assemblyman James Azim of Grant county, the state senate will probably be more cautious. Moreover, any change in the voting age law would require the consent of the voters of Wisconsin in a referendum next year — and in such a referendum only the presently qualified voters — those of 21 years and over, would be entitled to take part.

### THE ARGUMENTS

The typical assertion of a more liberal voting rule advocate is that young people today are more sophisticated, better educated, and otherwise wiser than were the forebears who established the 21 year test.

A government that commands the services of younger citizens in war should not refuse them the right to take part in the political decisions that lead to war.

on the Class A road been a movement to vehicles on the four way systems elsewhere country, which has in trucking interests pose the same limit rights here. But their critics of the plan for the most part is sion of private as drivers.

But last week when hearing on the plan the state senate, opponents were surprised. The only major argument made by an official constituent division of the Automobile association is worried about safety. The railroad associated forces, in opposition in the past, appear. Backing the Motor Carriers' association battery of witnesses Wisconsin business who claimed that more transportation services mean lower costs to their customers, and ability to compete with tries of other states.

### RHANCH HANK

Another legislative with respect to the frequency which the issue has been in the marble halls of legislature, is branch. b. Legislators had another listening to bitterly opposition on that question also.

The arguments were through long repeated neighborhoods in urban and especially some smaller and tankless cities, need the economic area that can be rendered a decentralization of cities, the legislators who there were other most of them represent independent corporations medium sized cities of who warned about the credit monopoly, if the

ly said the vehicle and LuVern's neck. He indicated that red shock, but ap- other serious in-

NG FROM PARTY ys were returning ument party given Donley and his Deo Carol Steven, polia, Minn.

na was treated at Memorial hospital e Falls and re- Donley was re- satisfactory condition.

MORE HURT r persons were in- mobile accidents on Washington county and over the week- al reports of ac- celved Wednesday ay snowfall made ous on highways, area. onging to. Lynn's e, Inc., skidded off e Kewaskum about ednesday on icy icattered reports accidents result- y damage were

Page 7, Col. 2)

"Santa" esidents by Loss

ren, young and ad this weekend erved that the laus on the lawn versetzer res- ile was stolen a bag of toys greeted resi- s at Kohlsville the Haberset- Intersection of . Young and old y the life-like ren frequently tasing. eartment has s investigating ntact Santa so n to his look- versetzer lawn f the holiday ving anyknow- g Santa Claus the sheriff's 88.

ance at Dec. 27

ie Lodge 1398, en age dance e Moose mem- at the Moose e hes nut on ec. 27. There m 8:30 to 12 Rippers fur- dancing. Ad- erson.



**THE WRECKED SPORTS CAR** driven by Larry J. Donley, 22, which went out of control on CTH Q in the village of Germantown early Sunday and rolled over in the ditch is shown. The crash took the life of Donley's father, LuVern J. Donley, 51. Both reside in the village of Germantown. The younger Don-

## Privilege Road Tax Share for County \$111,319

Supplemental Aids Add \$5,207

Every city, village and town in Wisconsin is receiving a share of an \$8 million "privilege" highway tax allotment on motor vehicles, plus a share of a new \$377,757 supplemental fund, both distributed in December by the State Highway Commission.

These are the final portions of about \$47.5 million in state highway funds returned to the local municipal units of government during the year. In addition to \$18.8 million in aids distributed directly to the 72 counties.

A total of \$111,319.45 from the privilege highway tax allotment is being distributed in Washington county to the following municipalities: CITIES of West Bend \$27,999.69, Hartford \$10,966.31; VILLAGES of Germantown \$10,475.77, Jackson \$1,781.34, Kewaskum \$4,827.68, Slinger \$2,738.29 and 13 towns \$52,530.37.

The county's share of the supplemental allowance from registration fees is \$5,207.82 and is being distributed to CITIES of West Bend \$1,236.18, Hartford \$517.80; VILLAGES of Germantown \$483.40, Jackson \$64.97, Kewaskum \$167.44, Slinger \$125.77 and 13 towns \$2,612.26.

"REGULAR" DISTRIBUTION The privilege highway tax allotment, regularly mailed in Dec-

(Continued on Page 7, Col. 4)

## WBHS Launches Forensics Season

The Forensics season commenced Saturday for the students of West Bend high as 14 local speakers performed in an exacting trophy meet at Marquette high school in Milwaukee.

Teamwise, the Badgers, competing below full strength, finished fifth in a field of 10 strong schools. Individual standouts for West Bend were orators Doris Brabender and Dave Scofield, who tied for third in their category, and Jane Labisky, who wound up fourth in prose interpretation. The Forensics season will resume on a full scale after the holidays with the staging of the annual West Bend High Speech Festival on Saturday, Jan. 14.

Ask Early: T...

ley was reported not seriously injured. His fiancée, Miss Dee Carol Stevens, 19, of Minneapolis, Minn., was treated at Menomonee Falls Memorial hospital and released. The group was reported returning from an engagement party for the young couple at the time of the crash. — Bob Boltz photo

## Firemen Extinguish Blaze at Paper Co.

Firemen from the No. 1 fire station on Hickory st. were called out at 2:50 p.m. Friday when sparks from a welder ignited waste paper in a baler at Lynn's Waste Paper Co., Inc., 121 Island ave.

Firemen extinguished the smoldering blaze without incident. A smoke ejector was used to clear the premises of smoke. Workers used a garden hose to wet down the smoldering paper while awaiting the firemen.

## Vandals Ravage School Building At Goldendale

Classes Called Off To Clean Up Mess

Vandals broke into the Golden-dale elementary school over the weekend and caused damage estimated at more than \$4,000 according to Police Chief Frank Riemer of the village of Germantown.

The vandalism was discovered about 6:30 p.m. Sunday, by the janitor, Edward Paegelow. The culprits gained entrance to the building by prying open a north window in the three room, modern one story building.

Damage was so extensive that classes for Monday were called off to provide time to clean up the debris; it was stated.

Interior windows were broken, light fixtures smashed, paint and crayons dumped and smeared on floors and walls, desks upset, and books, papers and other items and equipment thrown around.

The police chief said the vandals also did extensive damage in the school offices and in both the boys and girls rest rooms.

## Session on Public Service Attended By Local Students

Daniel Dunst and Karen Duescher, of West Bend participated Dec. 10 in a special conference on public service in America which was held at the University of Wisconsin in Madison under the joint auspices of the Republican National Committee and the Republican Party of Wisconsin. Daniel is a student at Stevens Point, and Karen is attending school at Madison.

The conference was the kickoff of a nationwide program, entitled "Opportunities, Unlimited," which seeks to demonstrate to young Americans that there are

## Appoint Citizen Advisory Group Of 31 Members

To Discuss School Needs With Board

A 31-member Citizens' Advisory group, to meet with the West Bend school board to discuss the need and solution for additional high school facilities, has been named. As authorized by the board, the members of the advisory group were appointed by Director R. Douglas Ziegler.

First meeting of the committee will be held tomorrow (Wednesday), Dec. 21, at 7:30 p.m. in the high school. Its membership reportedly includes a number of "no" voters on the recent bonding referendum.

## URGE LETTERS

Meanwhile, the regular board meeting was slated to be held yesterday (Monday) afternoon, starting at 4:30. Regular board meetings are held the second and third Mondays of the month and normally start at 4:30.

Last week the board extended an invitation to "no" voters to write P. O. Box 1002 and state their reason or reasons for turning down the referendum. Replies can be made anonymously and should be mailed before Christmas.

Selected to the Citizens' Advisory committee were the following:

## MEMBERS APPOINTED

City of West Bend - H. C. Bennallack, Pat Bradley, Mrs. Charles Chapman, Mrs. Robert Claus, Mrs. Norbert J. Griffin, Dr. Alvin T. Grundahl, George Hembel, Paul Henke, Mark Huber, Rev. Edmund Haen, Rev. Erling A. Jacobson, Marvin Juech, William Kranstover, Mrs. Richard Lewis, Judge J. Tom Merriam, C. A. Nelson, Merlin Oeder, Mrs. Stephen O'Meara, John M. Pick, Mrs. J. R. Reilly, Robert T. Rolfs, George Schickert, Jr., Atty. Clyde Schloemer, Mrs. Victor Wollner.

Rural areas of district - Mrs. Edward Bartl, Frank Falter, Mrs. Frank Orenick, Fred Yahr, Reuben Schmah, Arthur C. Schmid and Mrs. Walter Sprinkman.

## Anthony Yearling Joins 25-Year Club at A&P

In recognition of 25 years of service with The Great Atlantic & Pacific Tea Co., Inc., White House Mills division, Anthony Yearling was presented the 25-year award by F. H. Roberts, vice-president of White House Mills division, at a dinner party held in his honor at the Motor Hotel on Thursday, Dec. 15.

West Allis, but according to neighbors, had not worked for about three weeks because of a heart condition and "nervous tension." Roehl was a welder at International Harvester Co. in Milwaukee.

## "WENT BESERK"

Germantown village police said they could find no immediate motive for the shootings. Police Chief Frank Riemer was quoted as saying Buending "just went berserk."

Police found 11 rifles and four shotguns and two other handguns in Buending's room, one of two bedrooms in the Roehl ranch residence at W220N10970 Amy Belle rd. near the Mequon rd.

Mrs. Roehl was shot twice in the head and was found lying in a pool of blood in the kitchen. Her husband was shot in the leg. Apparently came to the house after hearing the shots which killed his wife. He had been filling bird feeders on the Roehl property when the shooting occurred.

After shooting Roehl, Buending shot a brown-and-white spaniel which the Roehls had given him and then fired a shot into the side of his own head.

Part of the shooting was witnessed by neighbors, Mr. and Mrs. James Sexton, N112-W21-751 Mequon rd. who were walk-

(Continued on Page 7, Col. 3)

## Plan Recreation In Area Schools During Vacation

Six Centers Open From Dec. 27-30

The traditional Christmas Vacation Recreation program will be conducted at six centers in the West Bend public schools on Dec. 27, 28, 29 and 30. Barton, Decorah, McLane and Silverbrook schools will be open from 10 a.m. - 12 noon and from 1 until 4 p.m. each day. Fair Park and Jackson schools will be open afternoons only from 1 to 4 p.m.

This program is open to all public, parochial and private school students of the school district in grades 1 - 9. However, 7th, 8th and 9th graders may use the Silverbrook facilities only. (1st - 6th graders may use Silverbrook too.)

Teacher supervisors are in charge of all buildings and will offer organized, free play and tournament activities.

A total of 288 awards will be presented to tournament winners in events such as chess, checkers, pool, basketball, ball shoot, etc. It was announced by Asa H. H. H.

## Plan Get Together Of College Students

The plan is to have a get-together of college students from the West Bend area. The event is scheduled for the weekend of Dec. 27-28 at the West Bend High School. The plan is to have a variety of activities, including a basketball game, a chess tournament, and a pool tournament. The event is free and open to all college students in the area.



# West Bend News

ISSUED EVERY TUESDAY AND THURSDAY AT WEST BEND, WIS. 53095

Single Copy 7c

NUMBER

## Electors Vote "No" on \$4,295,000 Bond Issue Referendum by 2,184 to 912 Margin

### Post Office Open

As has been the case in the past several years, the West Bend post office will remain open on Saturday, Dec. 10, and Saturday, Dec. 17 until 4 p. m. instead of closing at the usual earlier time.

It is hoped that the additional hours of service will encourage patrons to make the most of the convenience and make use of the postal service to hasten the delivery of their Christmas cards and packages.

### Name Panzer Emeritus Chief Of State Senate

#### Sen. Knowles Gets 'Pro Tem' Post

State Senator Frank E. Panzer Monday was named state senate president emeritus with Majority Leader Robert P. Knowles succeeding him as president pro tem, an office Panzer held for two decades.

Gov. Warren P. Knowles said Panzer's new position recognized him as "the older statesman, the advisor to the senate."

Sen. Jerris Leonard of Hayside will become the majority leader for the 1967 session while Sen. Robert W. Warren of Green Bay will succeed Leonard as assistant majority leader.

### CAUCUSED AT RESTAURANT

Republican leaders caucused in private at a Madison restaurant to make the selections. The Republicans hold a 21 to 2 majority in the state senate and will elect the leaders formally on the floor when the legislature convenes in January. Knowles, 50, is the younger brother of the governor. He succeeded Gov. Knowles in the senate in 1954 and has been majority leader the last two sessions.

### FIRST ELECTED IN '31

Panzer was reelected to the senate on Nov. 8 to represent a newly enlarged 13th district which now consists of Washington, Jefferson and approximately 1/2 of his home county, Dodge. He was first elected to the state legislature as an assemblyman in 1931 and as a senator in 1935 and 1937 and since 1943. He served as president pro tem since 1971.

### Today's Classified Advertisements Offer

A wig for sale.  
Stainless steel cookware.  
A western pleasure saddle.  
A hand saw.



**HOSPITAL CAREERS** have become more familiar to a number of West Bend high school students this fall, through an informative program in which St. Joseph's Community hospital cooperated with the school's guidance department.

Bonnie Fehring (left), a junior, last week spent an entire day in the physical therapy department, under the guidance of Gerald Nowak, physical therapist at the hospital. Here they look over some of the equipment used by patients.

First phase of the program was a panel given to the entire junior class at the high school by representatives of various professions active at the hospital. At a later date, a guided tour of the hospital was given to students who requested it through their guidance counselors. Last step in the program was given to a student (Bonnie) who expressed, by individual appointment, a desire for further observation in a specific department at the hospital.

—News Staff photo.

## Art Show Opening Set For Sunday at Gallery

Final plans have been made for the West Bend Area Artist Show scheduled to open at 2 p. m. Sunday at the West Bend Gallery.

through the month of December during the regular gallery hours. Festive decorations will greet

### But Space Is Still Critically Needed by '68

#### Electors Ponder Next Board Move

Electors of the West Bend school district Tuesday substantially defeated a \$4,295,000 bond issue referendum for the proposed new "East Campus" high school building on E. Decorah road, by a margin of 2,184 no votes to 912 yes votes.

Indications that the referendum probably would not pass seemingly pervaded the school district community in conversation, at various meetings in recent weeks and at the school district electors' meeting last Monday night. The margin of defeat, however, was surprising to most observers, considering that the critical need for additional educational facilities by September of 1968 is widely recognized.

Passage of the bond issue would have provided the district with a 1,500-student building, all equipment for 1,350 students, landscaping and other related costs.

**EMERGENCY HOUSING?** With enrollment rising rapidly, what will this defeat mean to the district? Supt. Paul M. Lockbore Wednesday morning said it was safe to say that "some kind" of emergency housing will have to be employed by 1968-69. Could it also mean a split shift? These and other questions will undoubtedly be answered by the board and administration in the not-too-distant future.

A breakdown of Tuesday's vote follows:

At High School (Wards 3, 4 and 5 and town of West Bend and Trenton) - 354 yes; 1,100 no votes.

At City hall (Wards 1, 2 and 6) - 246 yes; 601 no votes.

At Harton village hall (Ward 7 and towns of Addison and Barton) - 51 yes; 300 no votes.

At Jackson village hall (towns of Jackson and Polk and village of Jackson) - 61 yes; 114 no votes.

### NOTED DISSATISFACTION

Dissatisfaction with the overall cost of the project (largest in school district history), the type of building and various phases of the building and the philosophy proposed for the new building were voiced at the Monday night school meeting. Some dissatisfaction of the plan by faculty members was also voiced. Others, of course, were satisfied with the plan. Director H. Douglas Ziegler pointed out at that meeting:

(Continued on Page 12, Part 1)

### Labor Unit Asks Study of Revised Plans for School

#### Ask Early Session To Study Issue

A news release from the Washington County Central Labor Council was received by the West Bend News relative to the defeat on Tuesday of the bond referendum.

The release follows: "In view of the defeat of the proposed new secondary school bond referendum, the Washington County Central Labor Council's committee on effective schools respectfully submits the following suggestions to the board, to the administration, and to all interested parties of the West Bend School district:



# West Bend News

THURSDAY

MAY 10, 1967

TWO SECTIONS

PUBLISHED EVERY TUESDAY AND THURSDAY AT WEST BEND, WIS. 53095

Single Copy 7c

NUMBER 39

## Electors to Vote on \$3,950,000 Bond Referendum in District Next Tuesday

### Board Okays Barton School Grounds Work

#### Fair Park Addition Schedule 'Shocker'

Improvement of the Barton school playground, a startling estimation by the architect that the Fair Park school addition may not be ready until late in the year and the appointment of Newell "Nellie" Nelson as athletic director (grades 7-12) were among highlights of the West Bend school board meeting Monday night.

The long-discussed Barton playground project was approved, with the work to begin about June 8 and between \$5,000 and \$7,500 to be allowed for the job. It will include grading, seeding, blacktopping, fencing, sidewalk, installation of playground equipment and development of ball fields.

The Barton project will include some 18,000 square feet of additional blacktopping and 250 feet of new fence.

Jack Rief of the Flad architectural firm of Madison reported to the board that it would be unrealistic to expect the Fair Park addition to be completely ready for occupancy any earlier than several weeks after school opens in September. (Bids will be closed, as reported earlier, on June 20, and opened at 4:30 p. m. that day).

#### "OVERFLOW" IN FALL

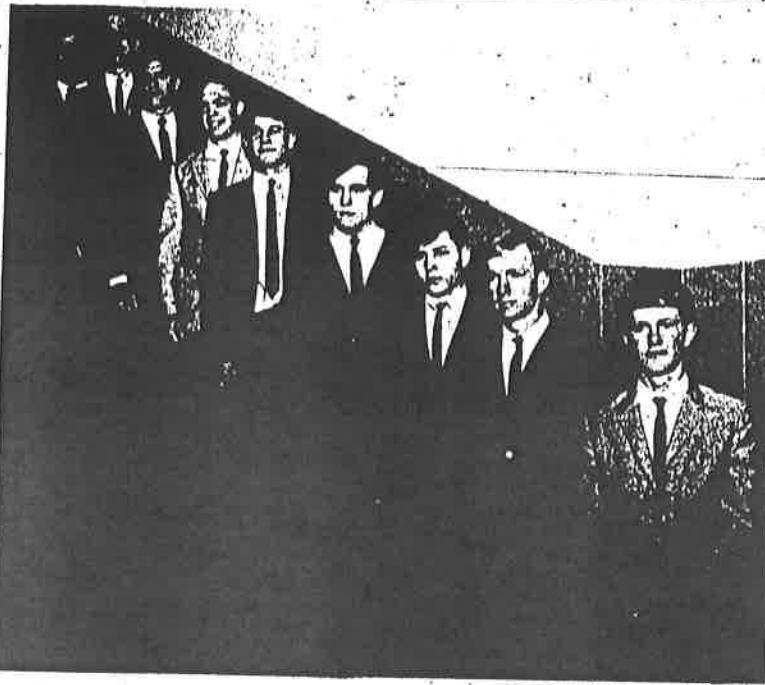
How the administration will cope with housing the "overflow" of students during those weeks is still "up in the air." Possible solutions are being discussed. R. Douglas Ziegler, director of the board, questioned Rief as to the wording to be used in the general contract and the building plans and landscaping were again reviewed.

The amount of blacktop area for playgrounds, parking area and the layout of the ball fields was a subject discussed at length.

(Continued on Page 8, Col. 3)

### Additional Labor Support for New School Revealed

At least three more labor endorsements for the revised high school referendum proposal in the West Bend school district were announced Tuesday evening. They were worded as follows: The executive board and bargaining committee of the Allied Industrial Workers, Local No. 533, at Line Material, recommends a "yes" vote on the May 23 referendum.



Pictured from left, are (with sponsors indicated):

Renard, Stan Presley, Friends of Badger Boys; John Lockwood, Rotary club; Chuck O'Meara, Moose Lodge; John Eichenseer, Rotary club; Roger Kocher, American Legion; Jeff Holmes, Jackson Legion; Tom Merriam, Kiwanis club, and Scott Ziegler, Rotary club.

— News Staff photo

EIGHT JUNIOR boys at West Bend high school have been selected for the 26th annual Badger Boys State program to be held at Rhin College from June 10-17. Atty. Henry Renard, left, of the Badger Boys State Committee for the West Bend American Legion post, announced the names of each of the delegates and their sponsors.

## District 'Alice' Contest Saturday at Kewaskum

Five Washington county girls will compete with 14 girls from surrounding counties for the honor of representing District 5 in the Alice in Dairyland finals at Green Bay, June 8 to 10.

The District 5 contest will be held this Saturday at Kewaskum high school in conjunction with the annual Kewaskum Dairy Day program. The Kewaskum Kiwanis club is sponsoring the day's program which will include a parade through the village at 2 p. m. and a style show at the Kewaskum theatre at 3 p. m.

Also on the day's agenda are a banquet at 5 p. m., entertainment by the "T Bones," and a special program for the public at 7:15 p. m. to be followed by the crowning of the contest winner.

LIST COUNTY CONTESTANTS  
County entrants in the Alice district contest at Kewaskum are Kathleen Reinsel of West Bend.

## Council Paves Way for Huge Bond Issue

### Funds Will Cover Various Projects

The West Bend common council Monday night paved the way for the eventual issuance of close to two million dollars of general obligation bonds, with the funds thus raised to be used to cover a number of civic projects. By unanimous consent, the aldermen voted on eight separate resolutions, each specifying the amount to be borrowed and the purpose for which the money will be used. The eight resolutions can't take effect until they are published for two consecutive weeks in the West Bend News, with the first publication appearing in today's edition.

While the resolutions cover eight different programs, they are expected to be officially adopted as a "package" program. This, as explained by City Atty. Thomas O'Meara, will permit the city to gain a better interest rate than could be acquired if each were adopted separately.

#### USES LISTED

Combined, the eight resolutions provide for the borrowing of \$1,950,000 for the following projects:

## Organized 'Yes' Support Seeks To 'Meet Need'

### Anticipate Close Vote in District

Although organized district-wide community efforts for a "yes" vote have predominated in recent weeks, how the electors will vote on the \$3,950,000 bond issue referendum for the proposed new high school building on Decorah road will not be determined until well after the polls close next Tuesday, May 23.

A bond referendum on the same subject was defeated Dec. 6. In response to wishes of the electorate, the school board made plan changes and reduced the cost by \$345,000. Although the urgent need for new facilities is well recognized in the rapidly growing district, some opposition continues to be heard as to the proposed facility, with the reasons varying considerably. A close vote is anticipated.

It seems that it takes a lot of organized individual and group support and salesmanship to pass the school bond issue referendums these days, as witnessed in numerous other communities, and that's just what has happened in this district, spearheaded, perhaps, by the YES committee, the Youth Education and School Committee, Inc.

The new referendum proposal has the support of labor, industry, teachers and the YES committee, composed of more than 150 prominent citizens in all walks of life.

#### MANY ENDORSEMENTS

There has also been a group or two that has made known its opposition to the referendum. (Note ad in West Bend News). The Washington County Central Labor Council recommends a No vote.

Latest labor endorsements in support of the referendum include those of the Line Material and Amity Leather local unions. (See separate story). The West Bend (Continued on Page 8, Col. 4)

## WBEA Board Criticizes Ad With 'Quotes'

The West Bend Education association executive board wishes to point out a few pertinent facts relative to the ad in Tuesday's West Bend News containing quotations from confidential mem-

With the city council control of only 3.5 mills total of 20 mills that he raised, you can understand



The clinic will get underway at the Germantown village hall on Tuesday, March 21, from 6-9 p.m., when a tuberculin skin test will be administered to anyone who has not been tested in the last three or four years. The tests will be read on Thursday, March 23, from 6-9 p.m., also in the Germantown village hall. Measles vaccine for anyone over one year of age who is susceptible to the disease will also be available at this clinic.

**FUTURE CLINICS POSSIBLE**  
It is the hope of the sponsoring groups that there is interest in more clinics to offer more immunization from common communicable diseases. Future clinics, including immunization as well as booster shots for diphtheria, tetanus, whooping cough, polio and smallpox, would require a fee of 50 cents each. For those interested in the total immunization clinic, contribution for purchase of the vaccine can be made at the Germantown village hall on March 21, 23 or at any other time. A nurse will be found at the village hall.

**SIMPLE SKIN TEST**  
The tuberculin test is being read through the Wisconsin Tuberculosis association. It is a harmless skin test that indicates whether or not tubercle germs have entered the body. A small amount of fluid of tuberculin, is placed beneath the layers of skin on the arm, and the test is read 48 hours later.

Measles vaccine is being read through the state board of health. Measles vaccine is usually needed after the age of 15, and should not be taken in the following situations:

1. leukemia, lymphoma and malignancy, if receiving therapy which depresses resistance, and marked sensitivity to eggs.

2. Ten per cent of individuals receiving the vaccine may experience fever of 103 degrees, lasting about the sixth day and no longer than five days. If there is any doubt about participation in the measles clinic, the physician should be consulted.

## Local Meeting Jackson PTA on March 16

Jackson PTA will meet at 7:30 p.m. on Thursday, March 16, at Jackson elementary school.

The picture above was moved from the truck platform into the News plant. Purchased at the process of being adjusted, the machine is scheduled to go into production for the newspaper in the very near future.

# Acceleration in Elementary Enrollment Hits District

## WB Board Reviews Space Shortages

A "phenomenal increase in enrollment in the last six to eight months" in the West Bend school district prompted the school board Monday and Tuesday evenings to devote considerable time to reviewing elementary school "space requirement alternates" for 1967-68.

A detailed study submitted by Peter J. Nannetti, assistant superintendent of schools, emphasizes that the district is anticipating a K-6 (kindergarten through sixth grade) enrollment of 2,309, which is 208 higher than Sept. 1, of 1966. Perhaps more significant is that 64 of these students have already been enrolled in the elementary schools,

apparently revealing a great deal of immigration.

**BIG CLASSES OR RENTAL?**  
Three plans were submitted for the board's consideration, summarized as follows:

Plan A - Utilization of all present elementary buildings, requiring undesirably large class sizes and a large amount of "ping-ponging" or changes in attendance areas.

Plan B - Like Plan A, utilization of all present elementary buildings (including in both cases, Oak Knoll) but also three additional temporary or rental classrooms in Fair Park and two additional temporary or rental classrooms in the Jackson area.

**PERMANENT ADDITIONS?**

Plan C - Utilization of all available elementary space in the district, plus: 1. Addition to the Fair Park school (approximately six rooms) and move all special education classes to this school. 2. Addition to the Jackson school (approximately three rooms). This plan would make available one additional classroom at Decorah, McLane, and Barton and with some reassignments in attendance areas, would reduce class loads at all schools. (Cost estimates were scheduled to be obtained from the architect Tuesday evening).

"These additional rooms will never hurt us," Nannetti said.

The board also discussed and is probing such possibilities as: use of portable classroom units (which would cost from \$11,000 to \$14,000 each), multiple shift which received little enthusiasm, dropping kindergarten and scheduling kindergarten only in the summer months.

Under both plan A and plan B, (Continued on Page 4, Col. 4)

## TV Documentary Series Planned By Ziegler Co.

A series of monthly half-hour color documentary programs produced by WISN-TV Milwaukee will be sponsored by B. C. Ziegler

some alternate plans. It is no wish to be released from this tract on June 30, 1967 and letter is my official request for such consideration."



PAUL M. LOOFBORO

Loofbore, who did not disclose his future plans except that he been "looking around" and plan to "carry out a long-range plan," in some educational field issued this announcement Tuesday morning to all employees of the school district.

## ANNOUNCEMENT TO STAFF

"It has been my privilege to serve this district as its superintendent since July 1, 1959. The various associations in West Bend have been very pleasant. For personal reasons, I find it advantageous to make a change. Recently I requested the board to permit me to be released from my current contract which runs to June 30, 1967."

"My official request for consideration was accepted by the board at its regular meeting March 13. I will, therefore, be terminating my relationship as superintendent of this district on June 30.

"Breaking such long established ties is difficult indeed for both Mrs. Loofbore and me. I will certainly be leaving with the very best wishes for each of our many friends."

Loofbore said at the board meeting that it was a most difficult decision to make but which he considered "the tremendous demands" of his position in the next two years, with the probability of many more weeks that would include "three or four night meetings," it was somewhat easier to make.

(Continued on Page 4, Col. 3)



## Youth Fined in Two Car Crash On County Road

A rural Hartford driver was found guilty of an amended charge of failure to report an accident and parking on the highway when he appeared before Judge Robert Stoltz Tuesday.

Curtis H. Becker, 18, R. 3, Hartford, was ordered to pay \$5 or serve 15 days in the county jail on the first charge and fined \$15 or serve five days in the county jail on the second charge.

Becker's car was allegedly wrecked on the St. Augustine rd. Thursday night with no lights visible to an approaching vehicle. The car was struck by an auto driven by Beulah M. Timm, 44, Colgate. Mrs. Timm and two children, Sandy, 16, and Daniel, 12, were injured in the crash. An earlier report of the accident indicated the Becker car and the Timm vehicle was in the road.

## School Board

(Continued from Page 1)

size of the present black-layground area.

Under this plan, the school district would still figure on all of its other facilities in the district, including Oak school. Expanded special education needs could also be accommodated under this plan, pointed out by Peter J. Stitt, assistant superintendent of schools.

### MUCH IMMIGRATION

Stressed at last week Monday school meeting, the district has experienced a great amount of immigration. Since Sept. 1, elementary school enrollment has increased by 68 students with four more added recently.

The board reviewed the alternative plans, one of which was eliminated, as the law permit dropping kindergarten. As for renting temporary classrooms, Director R. Douglas

Ziegler commented:

"This is a poor way of solving the problem. . . . It is simply postponing it."

Michael Gonring, jr., asked if the library was necessary and Nannetti quickly answered, "Very much so," describing it as "a basic need today in elementary schools." The school presently uses a small area (about half a classroom) for a library. The multi-purpose room, used for such things as physical education, assemblies, music and cafeteria, would be doubled in size to 51 x 62 feet.

## K-12 Enrollment To Climb by 365

An all-time high increase in enrollment of approximately 365 students will be experienced in the West Bend school district in September of this year, according to the projection. Enrollment as of Sept. 6, 1966 was 4,212, which is expected to rise to 4,577 by September of 1967. The increases in the four previous years were 332, (from 1965-66 to 1966-67), 242, 135 and 183.

### HIGH SCHOOL PROBLEM

Turning its attention briefly to the high school problem, the board scheduled a meeting with the architect on April 3 to review "cost cuts" being considered for the East Campus building that was turned down in a referendum in December. This information will then be reviewed at the meeting of the Citizen's Advisory committee at 7:30 p.m. April 6.

In other action, the board:

- Reviewed a report on special education needs, presented by Director Robert Malsch, but agreed to delay action, to allow more time to study its contents. They placed the matter on the agenda for the April 10 meeting.

- Heard reports on additional staff positions needed for 1967-68, and at the same time discussed pupil-teacher ratios, with more research requested by the

board in this area. The board finally approved 20.3 additional teaching positions, with possibly 1 1/2 more to be added.

After the administration was asked to survey or research a number of subjects, "to give the board guidelines" in these areas, Supt. Paul Loosboro asserted that "these things take a tremendous amount of time." He indicated that the administrators were already putting in long hours. Ziegler said he understood this, but "these are the kind of things anyone (electors) can ask at a meeting."

### RESIGNATION, SUMMER SCHOOL

- Accepted the resignation of Raymond Panfil, high school teacher, for personal reasons.

- Heard that the school system is operating "close to minimum standards" on the K-6 level in the areas of music, art and physical education.

- Reviewed district finances and discussed its short term borrowing problems.

- Approved the summer school program and fees, subject to further study on establishing "minimum size of classes." Total enrollment last summer was about 800.

- Reviewed high school class sizes. A board committee of two will meet with Principal Art Weiner, make their evaluation and report back to the board. The two board members are Gonring and Mrs. Wm. Nielsen.

- Discussed parking needs at the Jackson school.

- Approved the low bid on the high school renovation running track project, of \$17,190, set by Humphries-Hansen, Inc., of Milwaukee. Next lowest of three bids was \$18,000. Gene Stiefvater, landscape architect, described the semi-resilient track that will be provided and the sodding that will be involved. The contract will state that the project should start after school closes and be completed by the time school begins (including the sodding). The same firm has built similar tracks at New London and Slinger.

Street, owned by Loretta Kleinman, from Resident R-2 to District R-3. Upon Alderman Wagner the bid was closed. It was seconded by Slesar and unanimously carried on roll call.

**ORDINANCE NO. 800, A THE ZONING MAP** — An to amend the zoning map of City of West Bend was by Alderman Slesar, who be adopted. It was seconded by Alderman Pick and unanimously carried on roll call.

**ORDINANCE NO. 801, NAME CHANGE** — An changing Spruce Street Brook Drive was introduced by Alderman Groh, who moved it. It was seconded by Flasch and unanimously carried on roll call.

**ORDINANCE NO. 802, DEDICATING CERTAIN LANDS AS BROOK DRIVE** — An dedicating certain lands Brook Drive was introduced by Alderman Groh, who moved it. It was seconded by Mazik and unanimously carried on roll call.

**PURCHASE VACUUM CATCH BASIN CLEANER** — Recommendation by the Public Works the purchase of a vacuum, from Centennial Co., Inc. in the amount of \$13,850.00 was accepted upon motion of Alderman Slesar. It was by Alderman Mazik and unanimously carried on roll call.

**PURCHASE TANDEM TRUCK** — Upon recommendation of the Board of Public Works the purchase of a 1967 tandem truck from REO and FWD Truck Inc. in the amount of \$11,000.00 was accepted upon motion of Alderman Slesar. It was seconded by Groh and unanimously carried on roll call.

**ELM TREE SPRAYING** — Recommendation of the Public Works, the bid for elm trees was granted to Tree Surgery Co., Elgin, in the amount of \$3,810.00 upon motion of Alderman Slesar. It was

**Pen**  
ALWAYS FIRST



## Council

(Continued from Page 1)

# West Bend News

TUESDAY

MAY 16, 1967

EVERY TUESDAY AND THURSDAY AT WEST BEND, WIS. 53095

Single Copy 7c

NUMBER 38

## Heart Disease Is in Area Average

Exceed U. S.  
Averages

What is the heart disease in Washington county, with what it is in other he country? How many affected in the local

is being reported, heart and blood vessel electronic technology, to catheter and now tests, among others, of life to people who heart trouble, as well preventing its development who are prone to be afflicted.

Residents of Washington according to the latest in the U. S. Public 100,58.7 percent of all due to heart disease, and other ills of the lar system.

U. S. AVERAGE compares with 54.2 percent in the United States as a 57.1 percent in theconsin.

varies from one country to another, in-ranking states like Mississippi River and f them lie west of the rer as well.

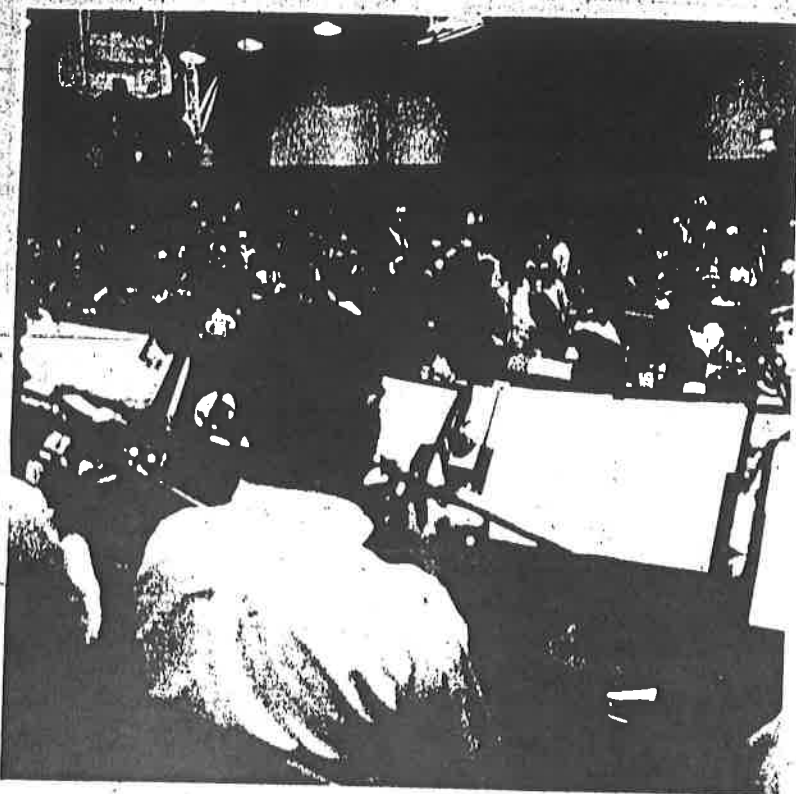
as reasons for this difference are air reditary background, physical activity and utional tension.

NTIVE ADVICE al figures show, for on county population, 2 heart deaths in the Jan. 1, 1965, with caused by strokes.

the prevention of comes from Dr. White, a founder of n Heart association. diet and weight are ant and should be om the age of 12 or

overnourished na- should wake up and is sive food as a h hazard. Also, a of blood is needed, is not only avoidance tion but also physil- terms of firm and s."

ake Home | Open Sunday  
nise program will Cedar Lake Home from 2 to 4 p.m. day 21. The event to commemorate anniversary of the home and the f Senior Citizens is being observed t the program visible to tour the department lead-



OVER 1,200 PERSONS filled the Silverbrook school gym to enjoy the annual Spring concert presented by five school bands Thursday evening. Here, Director Carl Ratzer was conducting, as one of his three bands was performing. He directed the Intermediate, Junior and Concert (primarily 9th grade)

bands after Darrel Nonhof directed the Beginner and Cadet bands. Students from 10 schools participated. Each band played five or six numbers, with the Concert band presenting two encores. The concert again received rave comments, even among a number in the audience who were compelled to stand.

## WBEA Dinner will Honor Ceil Podruch, Paul Loofboro

Public Reception  
To Follow Dinner

The West Bend Education association tomorrow (Wednesday) night will honor Ceil Podruch, German teacher retiring after 44 years of teaching (including 38 at West Bend high school) and Paul M. Loofboro, superintendent of schools in West Bend for the past eight years, who recently tendered his resignation, which will be effective June 30.

A 6:30 dinner at St. John's Lutheran church, will be held by the professional staff of the schools, to be followed by a "public" reception from 8 to 9 p.m.



PAUL M. LOOFBORO

ate work at the university.  
A member of the Modern Foreign Language association (national and state levels), she has also served as treasurer for the American Association of Teachers of German. She is an NEA, WEA and WBEA member and is also in AAUW. For years, she

## 'Now Generation' Topic of Ziegler TV Documentary

Program Will Be  
Broadcast Tonight

A curious breed of young people whose outlook on life could dramatically alter the course of history will be the subject of a locally produced half hour television documentary to be presented tonight (Tuesday), May 16, at 9 p.m. on WISN-TV-12.

The color broadcast, produced by WISN-TV News, will attempt to look at the world through the eyes of "THE NOW GENERATION"—Americans under 25, who will dominate our country's population by 1970. The news cameras will focus on everything from picketing to participating in campus programs to help underprivileged students in the inner core to discover what makes them tick. . . explore their goals, their attitudes, their ideas. Some adults have accused them of being alienated, uncommitted, irreligious and selfish, seeking change just for the sake of change. Others feel they are sincere and dedicated, not wanting to wait till tomorrow to tackle today's problems. The documentary will explore both points of view, hitting upon all angles of this truly different age group.

"THE NOW GENERATION" is the third of 10 WISN-TV News documentaries to be sponsored by B. C. Ziegler and Co., West Bend, the subject of

## Board Corrects 'Building Plan' Misimpressions

Modifications to  
Depend Upon Bids

The board of education of Joint School District No. 1 declared yesterday that certain erroneous impressions on the building plans for the Decorah road high school had come to its attention which it felt obliged to correct for the benefit of the electorate. (See floor plan and listing of facilities in today's News, page 7).

The referendum vote on the bond issue for the proposed school is scheduled for next Tuesday, May 23.

The board statement follows:

NO POOL, TRACK

1. There is no swimming pool.
2. There is no indoor track; a track oval will be painted on the gym floor.
3. The heat pump has been eliminated; conventional heating will be specified.

4. There is no large community-type auditorium; the 600-seat auditorium included in the plans is a multi-purpose educational and activities room. It can be divided into 3 separate rooms and will be used for lectures, science demonstrations, examinations, guidance tests, forensics, dramatic and musical rehearsals, school meetings, etc. This facility will also be available for community functions.

5. While the gymnasium includes a regulation hard-wood basketball court, the balance of it will have low cost composition flooring, and can be divided and simultaneously used by three physical education classes.

6. The cost reduction of \$345,000 was arrived at by determining what items could be eliminated, changed or modified without affecting the educational program for a 1500-student high school.

### COST REDUCTION EXPLAINED

Elimination of the heat pump and substitution of conventional heating specifications saved \$100,000. The other \$245,000 of cost reduction will affect air conditioning, hard surfaced parking lots, the elevator, bleachers, tennis courts, class room dividers, carpeting and certain equipment.

No final decision on these items can be made until the bids are received. It may be possible to include some of these items in whole or in part. Those not included now may be added in future years should they be desired by the electorate or should they become essential to the educational program."

## Soot Igites in Space Heater Pipe

MAY